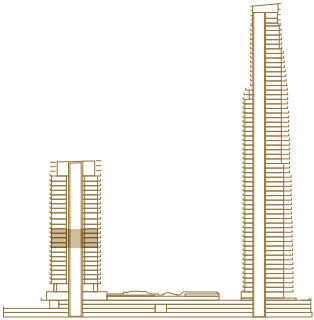
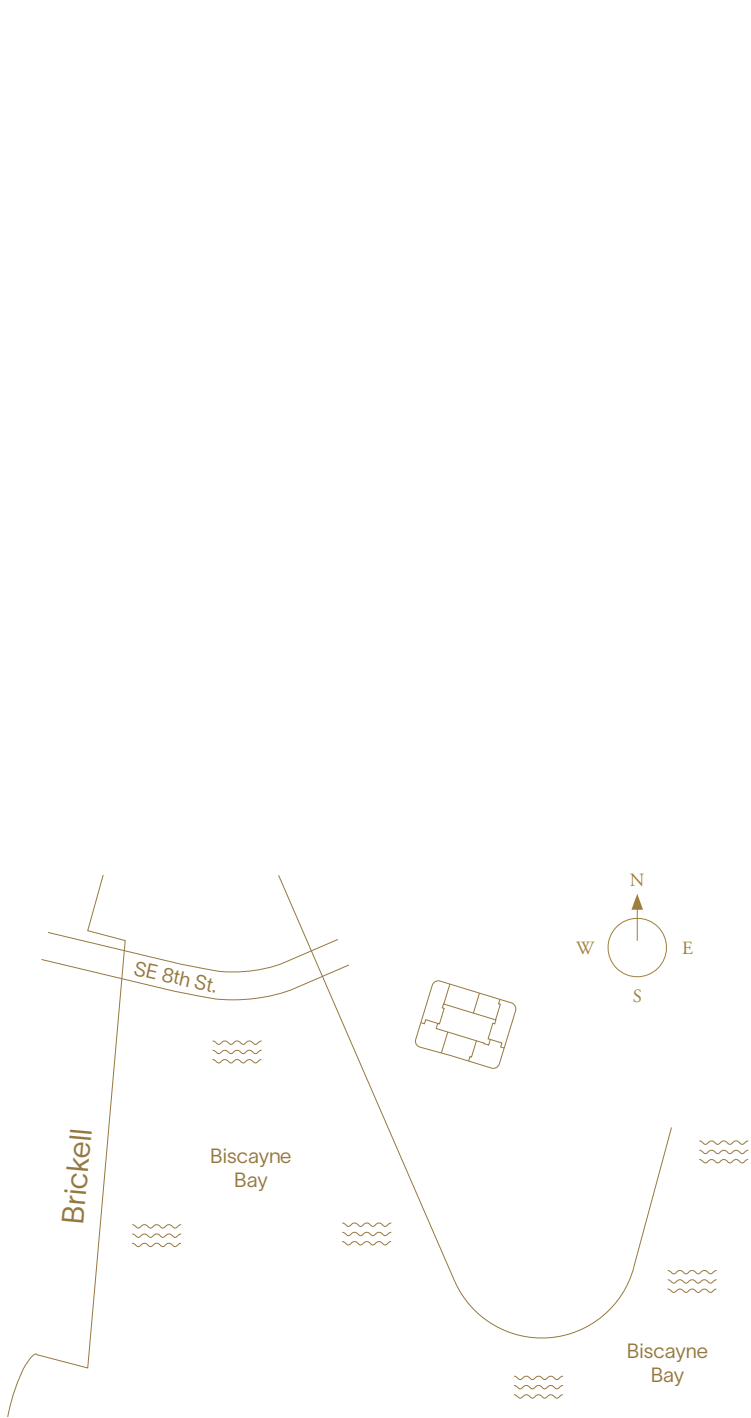




North Tower—Hotel Residences

Floor Plate

Levels 15–18



This project is being developed by OID T2 Developer LLC, a Florida limited liability company ("Developer"), which has a limited right to use the trademarked names and logos of Swire Properties and Mandarin Oriental Hotel Group. The Residences at Mandarin Oriental, Miami ("The Residences") are not developed, sponsored, owned, offered or sold by Mandarin Oriental Hotel Group or any affiliate thereof (MOHG), and MOHG makes no representation, warranty or guaranty of any kind regarding The Residences. Developer and owners of The Residences use the Mandarin Oriental name and trademarks subject to the terms of revocable licenses from MOHG which may expire or be terminated. ORAL REPRESENTATIONS CANNOT BE RELIED UPON AS CORRECTLY STATING THE REPRESENTATIONS OF THE DEVELOPER. FOR CORRECT REPRESENTATIONS, MAKE REFERENCE TO THIS WEBSITE AND TO THE DOCUMENTS REQUIRED BY SECTION 718.503, FLORIDA STATUTES, TO BE FURNISHED BY A DEVELOPER TO A BUYER OR LESSEE. In no event shall any solicitation, offer or sale of a unit in the condominium be made in, or to residents of, any state or country in which such activity would be unlawful. Stated square footages and dimensions are measured to the exterior boundaries of the exterior walls and the centerline of interior demising walls and in fact vary from the square footage and dimensions that would be determined by using the description and definition of the "Unit" set forth in the Declaration (which generally only includes the interior airspace between the perimeter walls and excludes all interior structural components and other common elements). This method is generally used in sales materials and is provided to allow a prospective buyer to compare the Units with units in other condominium projects that utilize the same method. Measurements of rooms set forth on this floor plan are generally taken at the farthest points of each given room (as if the room were a perfect rectangle), without regard for any cutouts or variations. Accordingly, the area of the actual room will typically be smaller than the product obtained by multiplying the stated length and width. All balcony areas are to interior glass face of guardrail (not construction gross). All dimensions are estimates which will vary with actual construction, and all floor plans, specifications and other development plans are subject to change and will not necessarily accurately reflect the final plans and specifications for The Residences. If circumstances arise which, in Developer's opinion, warrant changes of suppliers, manufacturers, brand names, models or items, or if Developer elects to omit certain items, Developer may modify the list of standard features or make substitutions for equipment, material, appliances, brands, models, etc., with items which in Developer's opinion are of equal or better quality (regardless of cost). All descriptions of furniture, appliances, and other matters of detail, including, without limitation, items of finish and decoration, are conceptual only and are not necessarily included in each unit. Furnishings are only included if and to the extent provided in your purchase agreement. Prices, features, amenities and other descriptions are preliminary and are subject to change without notice, as provided in your purchase agreement. Prices do not include optional features or premiums for upgraded units. Price changes may occur that are not yet reflected herein. Buyers should check with the sales center for the most current pricing. The project graphics, renderings and text provided herein are copyrighted works owned by the Developer. All rights reserved. Unauthorized reproduction, display or other dissemination of such materials is strictly prohibited and constitutes copyright infringement.



North Tower—Hotel Residences

Residence 00

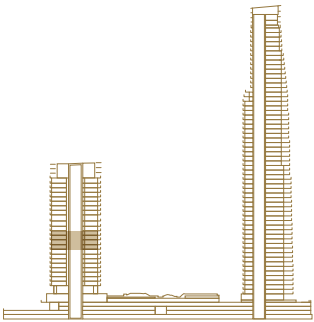
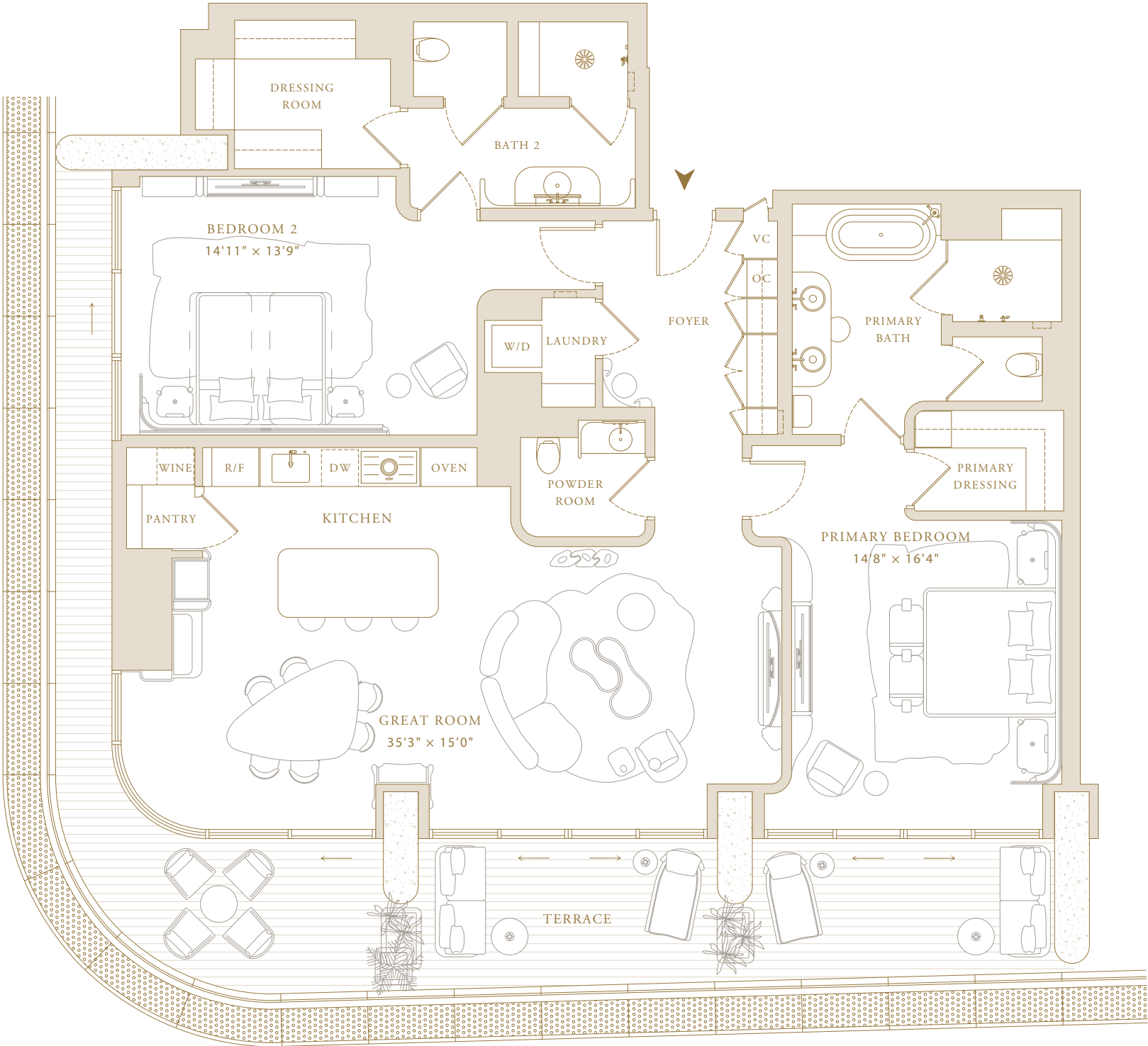
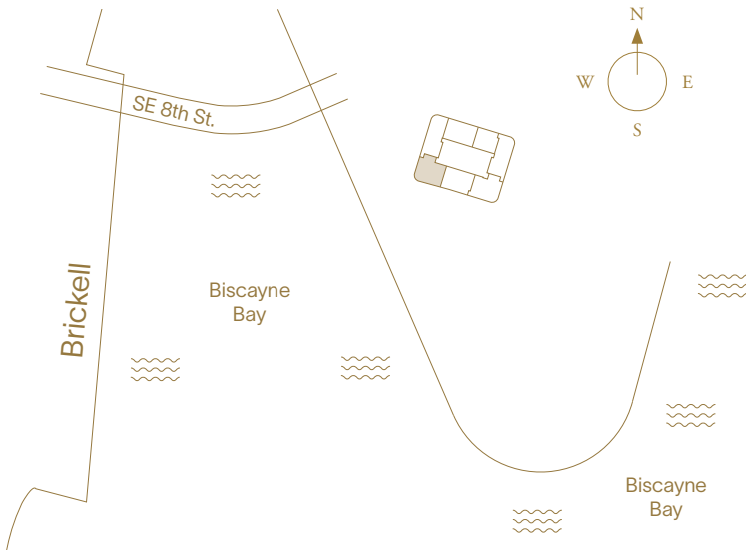
Levels 15–18

2 Bedrooms
2 Bathrooms
Powder Room

Indoor Area
1,987 SF (185 SM)

Features

- Fully Fitted Out Residence Including Furniture
- Valet Closet for Delivery/Services by Mandarin Oriental
- Entry Foyer
- Owner’s Closet
- Molteni&C Kitchen with Gaggenau Appliances
- Walk-In Pantry
- Fully Finished Closet
- Soaking Tub in Primary Bathroom
- Laundry Room
- Dedicated Storage



This project is being developed by OID T2 Developer LLC, a Florida limited liability company ("Developer"), which has a limited right to use the trademarked names and logos of Swire Properties and Mandarin Oriental Hotel Group. The Residences at Mandarin Oriental, Miami ("The Residences") are not developed, sponsored, owned, offered or sold by Mandarin Oriental Hotel Group or any affiliate thereof (MOHG), and MOHG makes no representation, warranty or guaranty of any kind regarding The Residences. Developer and owners of The Residences use the Mandarin Oriental name and trademarks subject to the terms of revocable licenses from MOHG which may expire or be terminated. ORAL REPRESENTATIONS CANNOT BE RELIED UPON AS CORRECTLY STATING THE REPRESENTATIONS OF THE DEVELOPER. FOR CORRECT REPRESENTATIONS, MAKE REFERENCE TO THIS WEBSITE AND TO THE DOCUMENTS REQUIRED BY SECTION 718.503, FLORIDA STATUTES, TO BE FURNISHED BY A DEVELOPER TO A BUYER OR LESSEE. In no event shall any solicitation, offer or sale of a unit in the condominium be made in, or to residents of, any state or country in which such activity would be unlawful. Stated square footages and dimensions are measured to the exterior boundaries of the exterior walls and the centerline of interior demising walls and in fact vary from the square footage and dimensions that would be determined by using the description and definition of the "Unit" set forth in the Declaration (which generally only includes the interior airspace between the perimeter walls and excludes all interior structural components and other common elements). This method is generally used in sales materials and is provided to allow a prospective buyer to compare the Units with units in other condominium projects that utilize the same method. Measurements of rooms set forth on this floor plan are generally taken at the farthest points of each given room (as if the room were a perfect rectangle), without regard for any cutouts or variations. Accordingly, the area of the actual room will typically be smaller than the product obtained by multiplying the stated length and width. All balcony areas are to interior glass face of guardrail (not construction gross). All dimensions are estimates which will vary with actual construction, and all floor plans, specifications and other development plans are subject to change and will not necessarily accurately reflect the final plans and specifications for The Residences. If circumstances arise which, in Developer's opinion, warrant changes of suppliers, manufacturers, brand names, models or items, or if Developer elects to omit certain items, Developer may modify the list of standard features or make substitutions for equipment, material, appliances, brands, models, etc., with items which in Developer's opinion are of equal or better quality (regardless of cost). All descriptions of furniture, appliances, and other matters of detail, including, without limitation, items of finish and decoration, are conceptual only and are not necessarily included in each unit. Furnishings are only included if and to the extent provided in your purchase agreement. Prices, features, amenities and other descriptions are preliminary and are subject to change without notice, as provided in your purchase agreement. Prices do not include optional features or premiums for upgraded units. Price changes may occur that are not yet reflected herein. Buyers should check with the sales center for the most current pricing. The project graphics, renderings and text provided herein are copyrighted works owned by the Developer. All rights reserved. Unauthorized reproduction, display or other dissemination of such materials is strictly prohibited and constitutes copyright infringement.



North Tower — Hotel Residences

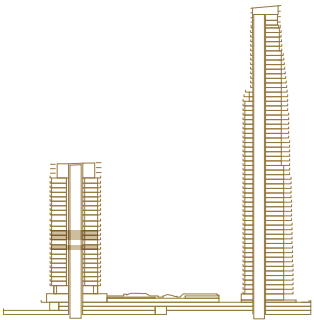
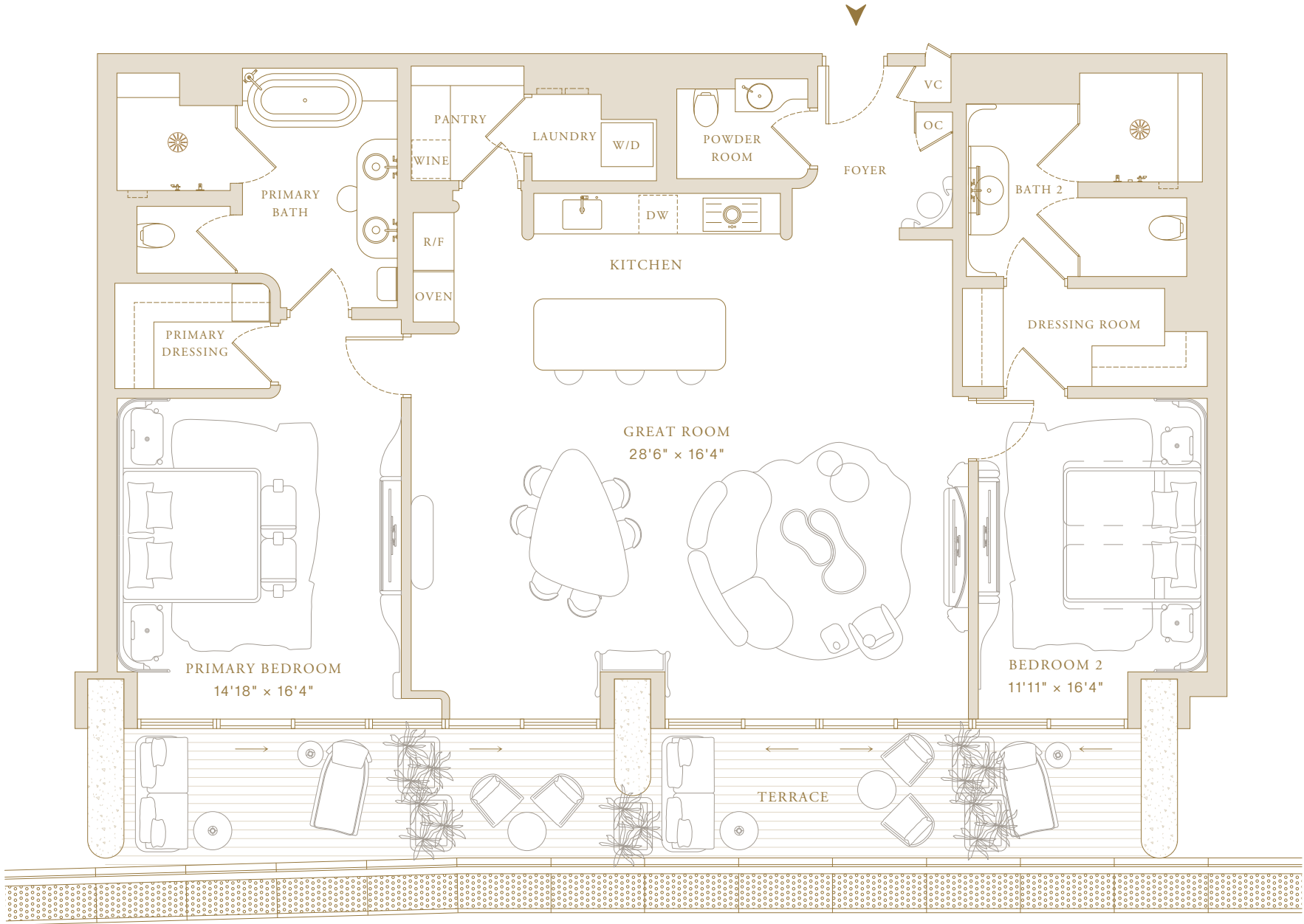
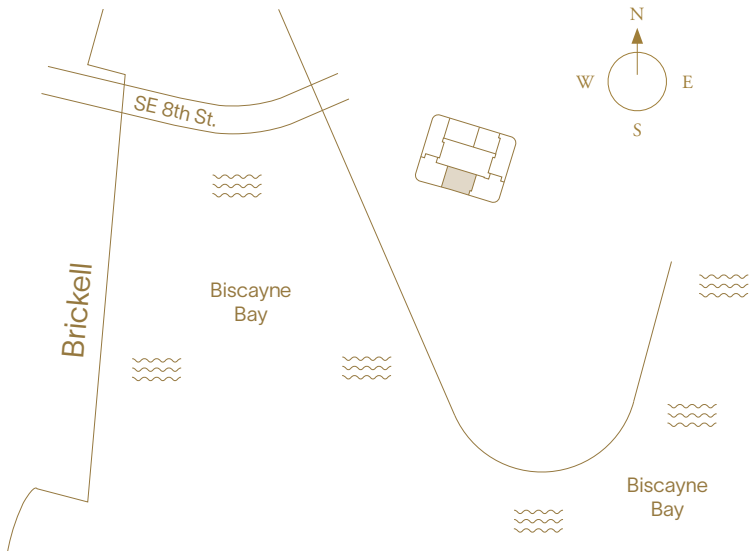
Residence 01

Levels 15, 17, 18

2 Bedrooms
2 Bathrooms
Powder Room

Indoor Area
1,949 SF (181 SM)

- Features
- Fully Fitted Out Residence Including Furniture
 - Valet Closet for Delivery/Services by Mandarin Oriental
 - Entry Foyer
 - Owner’s Closet
 - Molteni&C Kitchen with Gaggenau Appliances
 - Walk-In Pantry
 - Fully Finished Closet
 - Soaking Tub in Primary Bathroom
 - Laundry Room
 - Dedicated Storage



This project is being developed by OID T2 Developer LLC, a Florida limited liability company ("Developer"), which has a limited right to use the trademarked names and logos of Swire Properties and Mandarin Oriental Hotel Group. The Residences at Mandarin Oriental, Miami ("The Residences") are not developed, sponsored, owned, offered or sold by Mandarin Oriental Hotel Group or any affiliate thereof (MOHG), and MOHG makes no representation, warranty or guaranty of any kind regarding The Residences. Developer and owners of The Residences use the Mandarin Oriental name and trademarks subject to the terms of revocable licenses from MOHG which may expire or be terminated. ORAL REPRESENTATIONS CANNOT BE RELIED UPON AS CORRECTLY STATING THE REPRESENTATIONS OF THE DEVELOPER. FOR CORRECT REPRESENTATIONS, MAKE REFERENCE TO THIS WEBSITE AND TO THE DOCUMENTS REQUIRED BY SECTION 718.503, FLORIDA STATUTES, TO BE FURNISHED BY A DEVELOPER TO A BUYER OR LESSEE. In no event shall any solicitation, offer or sale of a unit in the condominium be made in, or to residents of, any state or country in which such activity would be unlawful. Stated square footages and dimensions are measured to the exterior boundaries of the exterior walls and the centerline of interior demising walls and in fact vary from the square footage and dimensions that would be determined by using the description and definition of the "Unit" set forth in the Declaration (which generally only includes the interior airspace between the perimeter walls and excludes all interior structural components and other common elements). This method is generally used in sales materials and is provided to allow a prospective buyer to compare the Units with units in other condominium projects that utilize the same method. Measurements of rooms set forth on this floor plan are generally taken at the farthest points of each given room (as if the room were a perfect rectangle), without regard for any cutouts or variations. Accordingly, the area of the actual room will typically be smaller than the product obtained by multiplying the stated length and width. All balcony areas are to interior glass face of guardrail (not construction gross). All dimensions are estimates which will vary with actual construction, and all floor plans, specifications and other development plans are subject to change and will not necessarily accurately reflect the final plans and specifications for The Residences. If circumstances arise which, in Developer's opinion, warrant changes of suppliers, manufacturers, brand names, models or items, or if Developer elects to omit certain items, Developer may modify the list of standard features or make substitutions for equipment, material, appliances, brands, models, etc., with items which in Developer's opinion are of equal or better quality (regardless of cost). All descriptions of furniture, appliances, and other matters of detail, including, without limitation, items of finish and decoration, are conceptual only and are not necessarily included in each unit. Furnishings are only included if and to the extent provided in your purchase agreement. Prices, features, amenities and other descriptions are preliminary and are subject to change without notice, as provided in your purchase agreement. Prices do not include optional features or premiums for upgraded units. Price changes may occur that are not yet reflected herein. Buyers should check with the sales center for the most current pricing. The project graphics, renderings and text provided herein are copyrighted works owned by the Developer. All rights reserved. Unauthorized reproduction, display or other dissemination of such materials is strictly prohibited and constitutes copyright infringement.



North Tower—Hotel Residences

Residence 02

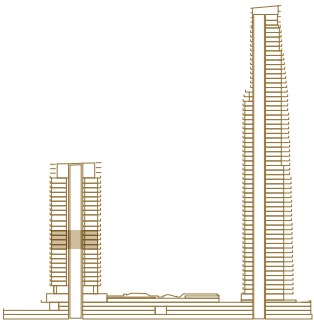
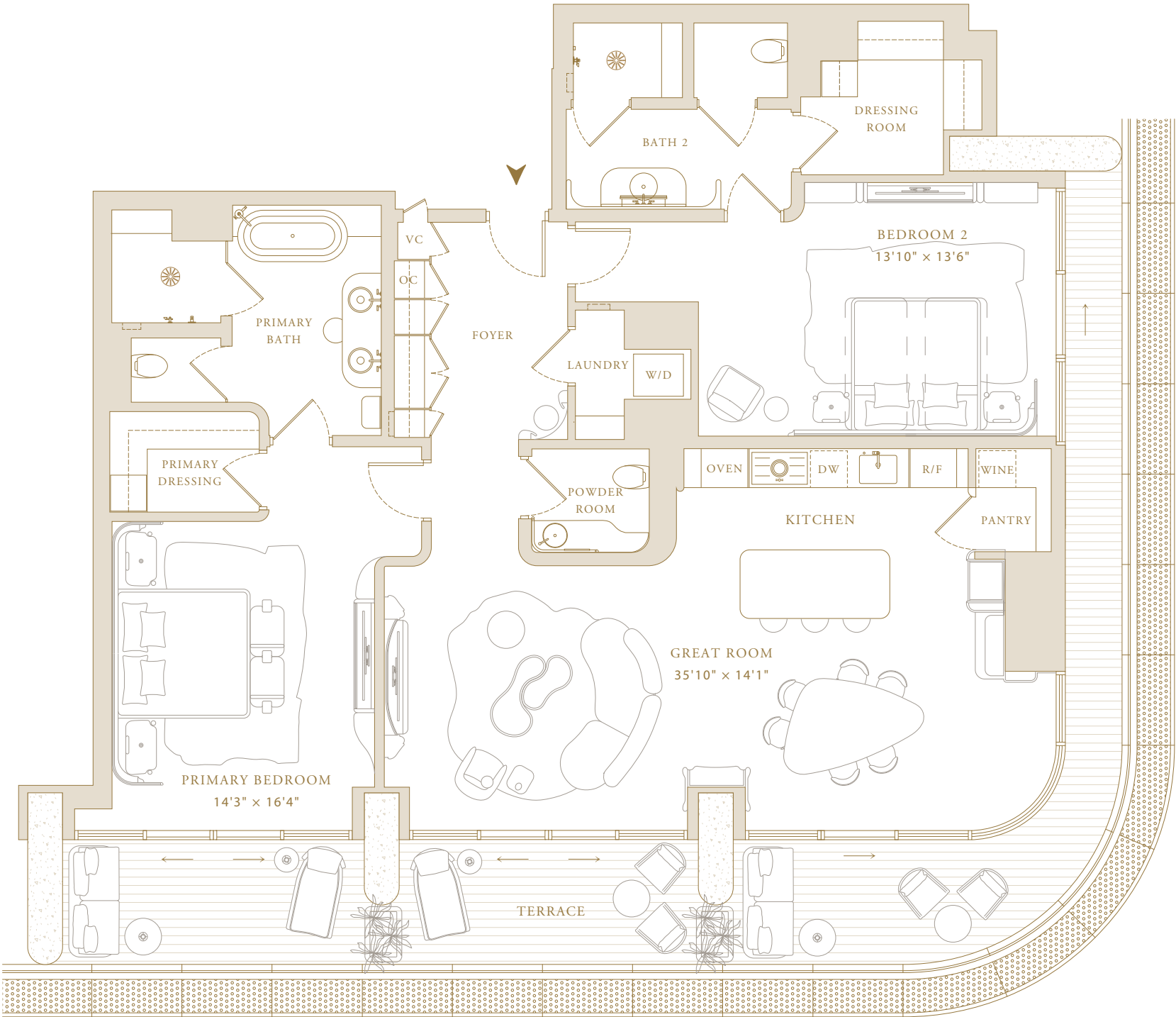
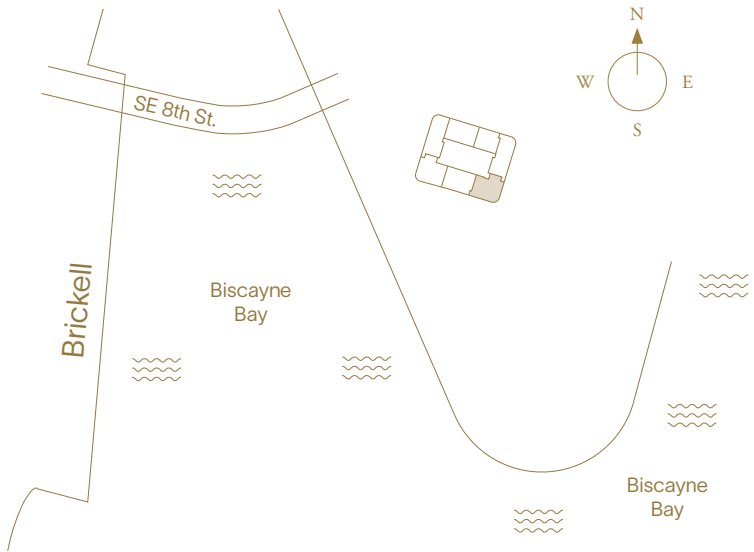
Levels 15–18

2 Bedrooms
2 Bathrooms
Powder Room

Indoor Area
1,985 SF (184 SM)

Features

- Fully Fitted Out Residence Including Furniture
- Valet Closet for Delivery/Services by Mandarin Oriental
- Entry Foyer
- Owner’s Closet
- Molteni&C Kitchen with Gaggenau Appliances
- Walk-In Pantry
- Fully Finished Closet
- Soaking Tub in Primary Bathroom
- Laundry Room
- Dedicated Storage



This project is being developed by OID T2 Developer LLC, a Florida limited liability company ("Developer"), which has a limited right to use the trademarked names and logos of Swire Properties and Mandarin Oriental Hotel Group. The Residences at Mandarin Oriental, Miami ("The Residences") are not developed, sponsored, owned, offered or sold by Mandarin Oriental Hotel Group or any affiliate thereof (MOHG), and MOHG makes no representation, warranty or guaranty of any kind regarding The Residences. Developer and owners of The Residences use the Mandarin Oriental name and trademarks subject to the terms of revocable licenses from MOHG which may expire or be terminated. ORAL REPRESENTATIONS CANNOT BE RELIED UPON AS CORRECTLY STATING THE REPRESENTATIONS OF THE DEVELOPER. FOR CORRECT REPRESENTATIONS, MAKE REFERENCE TO THIS WEBSITE AND TO THE DOCUMENTS REQUIRED BY SECTION 718.503, FLORIDA STATUTES, TO BE FURNISHED BY A DEVELOPER TO A BUYER OR LESSEE. In no event shall any solicitation, offer or sale of a unit in the condominium be made in, or to residents of, any state or country in which such activity would be unlawful. Stated square footages and dimensions are measured to the exterior boundaries of the exterior walls and the centerline of interior demising walls and in fact vary from the square footage and dimensions that would be determined by using the description and definition of the "Unit" set forth in the Declaration (which generally only includes the interior airspace between the perimeter walls and excludes all interior structural components and other common elements). This method is generally used in sales materials and is provided to allow a prospective buyer to compare the Units with units in other condominium projects that utilize the same method. Measurements of rooms set forth on this floor plan are generally taken at the farthest points of each given room (as if the room were a perfect rectangle), without regard for any cutouts or variations. Accordingly, the area of the actual room will typically be smaller than the product obtained by multiplying the stated length and width. All balcony areas are to interior glass face of guardrail (not construction gross). All dimensions are estimates which will vary with actual construction, and all floor plans, specifications and other development plans are subject to change and will not necessarily accurately reflect the final plans and specifications for The Residences. If circumstances arise which, in Developer's opinion, warrant changes of suppliers, manufacturers, brand names, models or items, or if Developer elects to omit certain items, Developer may modify the list of standard features or make substitutions for equipment, material, appliances, brands, models, etc., with items which in Developer's opinion are of equal or better quality (regardless of cost). All descriptions of furniture, appliances, and other matters of detail, including, without limitation, items of finish and decoration, are conceptual only and are not necessarily included in each unit. Furnishings are only included if and to the extent provided in your purchase agreement. Prices, features, amenities and other descriptions are preliminary and are subject to change without notice, as provided in your purchase agreement. Prices do not include optional features or premiums for upgraded units. Price changes may occur that are not yet reflected herein. Buyers should check with the sales center for the most current pricing. The project graphics, renderings and text provided herein are copyrighted works owned by the Developer. All rights reserved. Unauthorized reproduction, display or other dissemination of such materials is strictly prohibited and constitutes copyright infringement.



North Tower—Hotel Residences

Residence 03

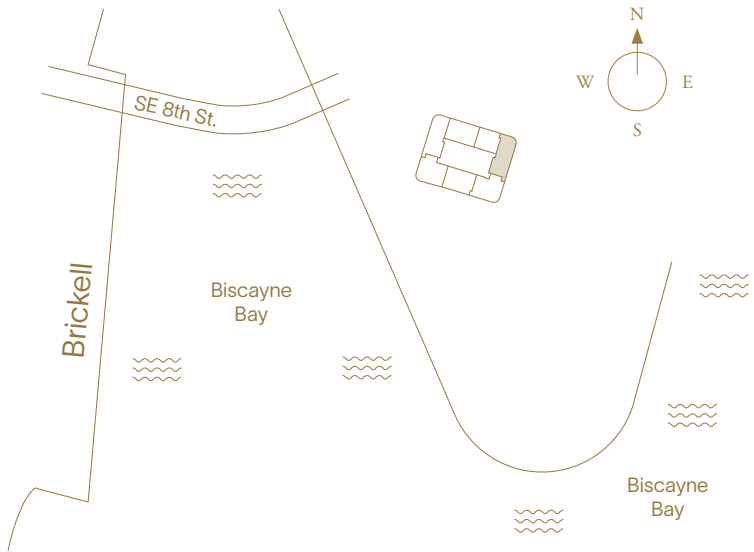
Levels 15–18

- 2 Bedrooms
- 2 Bathrooms
- Powder Room

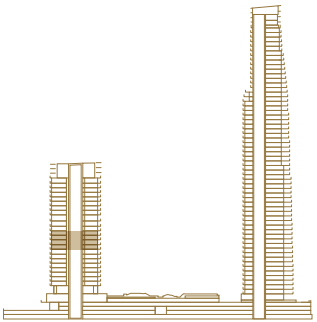
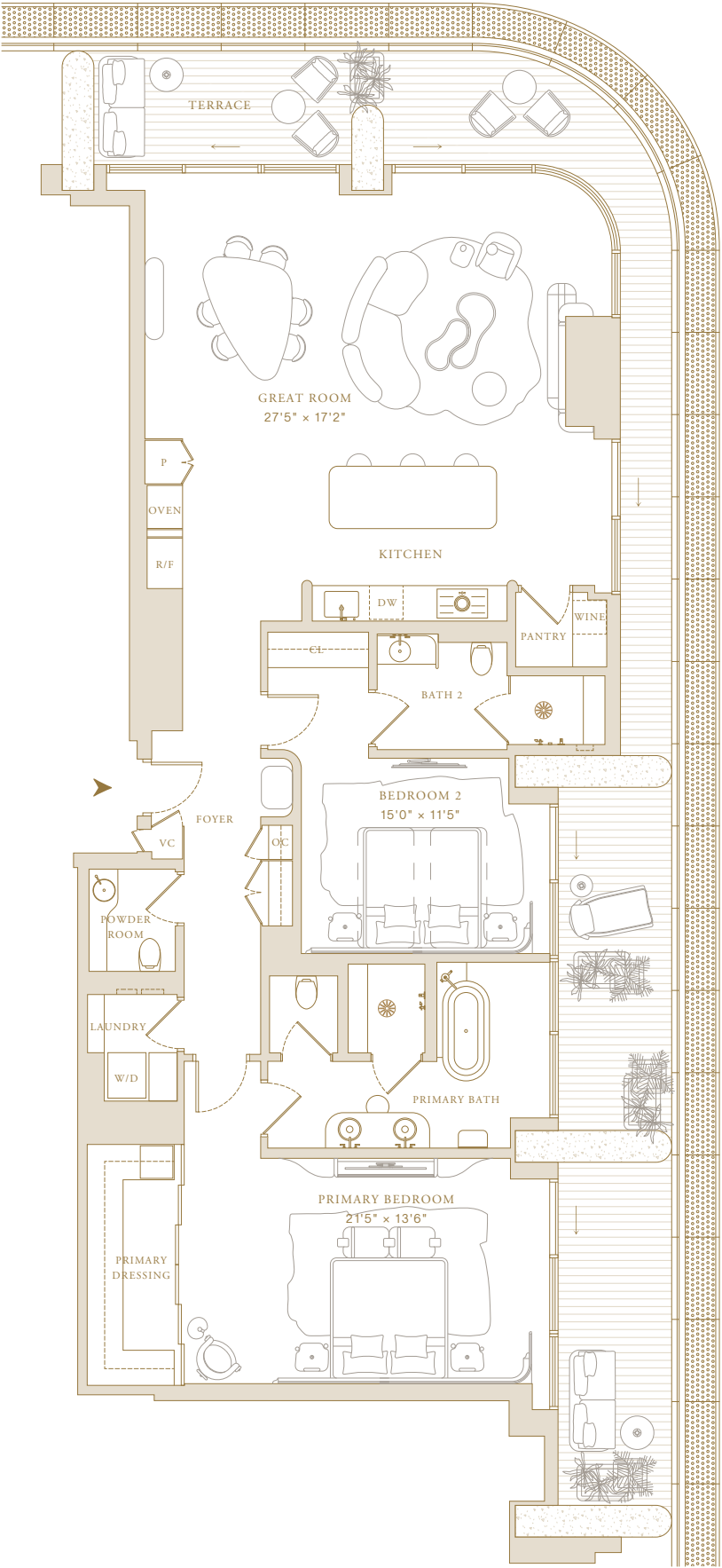
Indoor Area
1,998 SF (186 SM)

Features

- Fully Fitted Out Residence Including Furniture
- Valet Closet for Delivery/Services by Mandarin Oriental
- Entry Foyer
- Owner’s Closet
- Molteni&C Kitchen with Gaggenau Appliances
- Walk-In Pantry
- Fully Finished Closet
- Soaking Tub in Primary Bathroom
- Laundry Room
- Dedicated Storage



This project is being developed by OID T2 Developer LLC, a Florida limited liability company ("Developer"), which has a limited right to use the trademarked names and logos of Swire Properties and Mandarin Oriental Hotel Group. The Residences at Mandarin Oriental, Miami ("The Residences") are not developed, sponsored, owned, offered or sold by Mandarin Oriental Hotel Group or any affiliate thereof (MOHG), and MOHG makes no representation, warranty or guaranty of any kind regarding The Residences. Developer and owners of The Residences use the Mandarin Oriental name and trademarks subject to the terms of revocable licenses from MOHG which may expire or be terminated. ORAL REPRESENTATIONS CANNOT BE RELIED UPON AS CORRECTLY STATING THE REPRESENTATIONS OF THE DEVELOPER. FOR CORRECT REPRESENTATIONS, MAKE REFERENCE TO THIS WEBSITE AND TO THE DOCUMENTS REQUIRED BY SECTION 718.503, FLORIDA STATUTES, TO BE FURNISHED BY A DEVELOPER TO A BUYER OR LESSEE. In no event shall any solicitation, offer or sale of a unit in the condominium be made in, or to residents of, any state or country in which such activity would be unlawful. Stated square footages and dimensions are measured to the exterior boundaries of the exterior walls and the centerline of interior demising walls and in fact vary from the square footage and dimensions that would be determined by using the description and definition of the "Unit" set forth in the Declaration (which generally only includes the interior airspace between the perimeter walls and excludes all interior structural components and other common elements). This method is generally used in sales materials and is provided to allow a prospective buyer to compare the Units with units in other condominium projects that utilize the same method. Measurements of rooms set forth on this floor plan are generally taken at the farthest points of each given room (as if the room were a perfect rectangle), without regard for any cutouts or variations. Accordingly, the area of the actual room will typically be smaller than the product obtained by multiplying the stated length and width. All balcony areas are to interior glass face of guardrail (not construction gross). All dimensions are estimates which will vary with actual construction, and all floor plans, specifications and other development plans are subject to change and will not necessarily accurately reflect the final plans and specifications for The Residences. If circumstances arise which, in Developer's opinion, warrant changes of suppliers, manufacturers, brand names, models or items, or if Developer elects to omit certain items, Developer may modify the list of standard features or make substitutions for equipment, material, appliances, brands, models, etc., with items which in Developer's opinion are of equal or better quality (regardless of cost). All descriptions of furniture, appliances, and other matters of detail, including, without limitation, items of finish and decoration, are conceptual only and are not necessarily included in each unit. Furnishings are only included if and to the extent provided in your purchase agreement. Prices, features, amenities and other descriptions are preliminary and are subject to change without notice, as provided in your purchase agreement. Prices do not include optional features or premiums for upgraded units. Price changes may occur that are not yet reflected herein. Buyers should check with the sales center for the most current pricing. The project graphics, renderings and text provided herein are copyrighted works owned by the Developer. All rights reserved. Unauthorized reproduction, display or other dissemination of such materials is strictly prohibited and constitutes copyright infringement.





North Tower—Hotel Residences

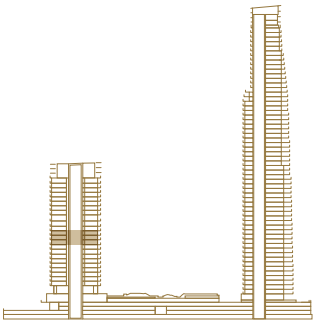
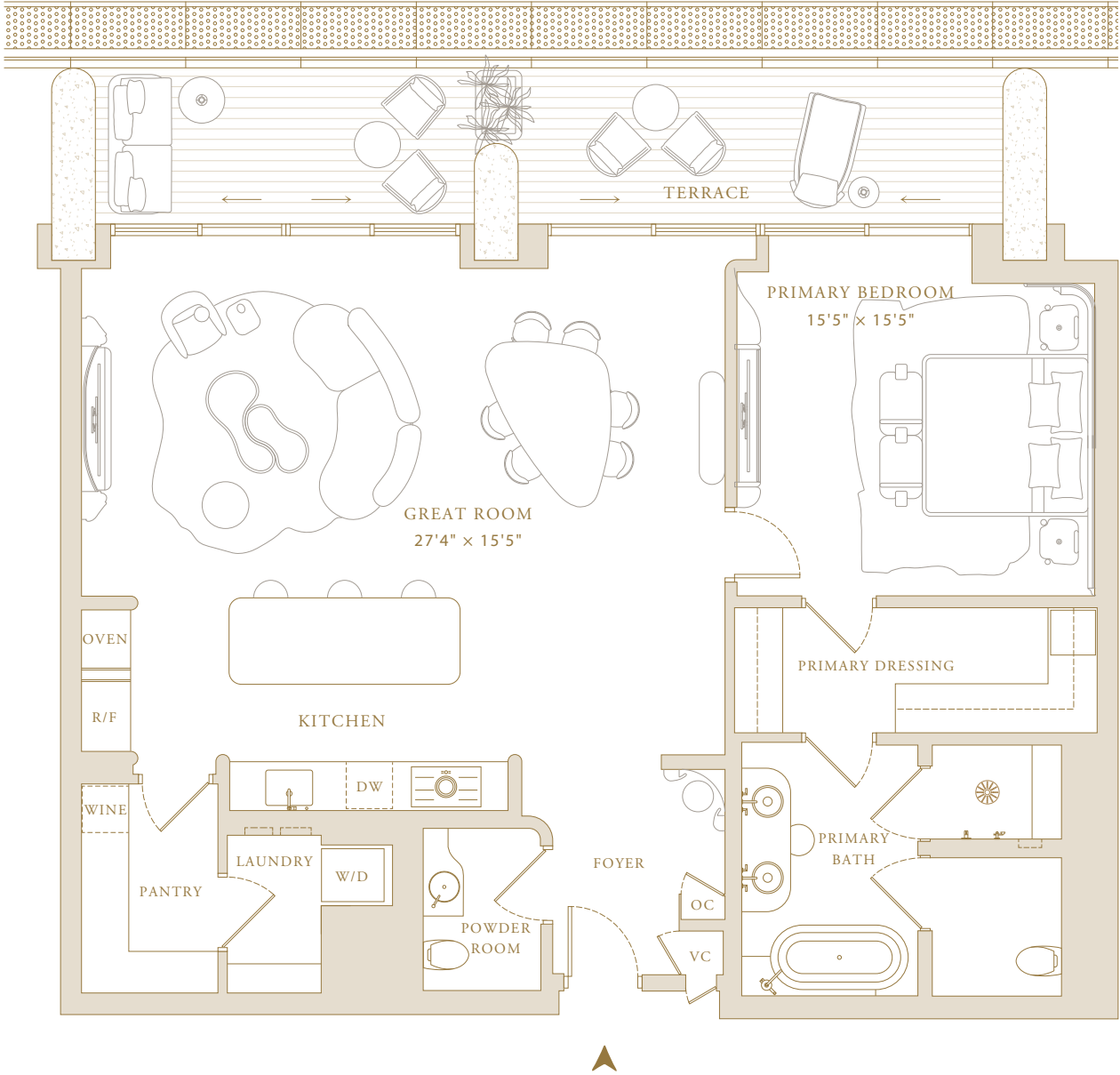
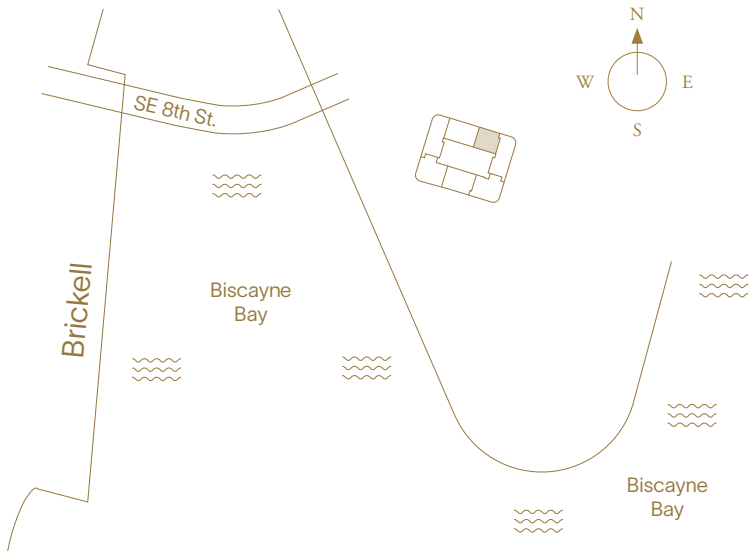
Residence 04

Levels 16–18

- 1 Bedroom
- 1 Bathroom
- Powder Room

Indoor Area
1,458 SF (135 SM)

- Features
- Fully Fitted Out Residence Including Furniture
 - Valet Closet for Delivery/Services by Mandarin Oriental
 - Entry Foyer
 - Owner’s Closet
 - Molteni&C Kitchen with Gaggenau Appliances
 - Walk-In Pantry
 - Fully Finished Closet
 - Soaking Tub in Primary Bathroom
 - Laundry Room
 - Dedicated Storage



This project is being developed by OID T2 Developer LLC, a Florida limited liability company ("Developer"), which has a limited right to use the trademarked names and logos of Swire Properties and Mandarin Oriental Hotel Group. The Residences at Mandarin Oriental, Miami ("The Residences") are not developed, sponsored, owned, offered or sold by Mandarin Oriental Hotel Group or any affiliate thereof (MOHG), and MOHG makes no representation, warranty or guaranty of any kind regarding The Residences. Developer and owners of The Residences use the Mandarin Oriental name and trademarks subject to the terms of revocable licenses from MOHG which may expire or be terminated. ORAL REPRESENTATIONS CANNOT BE RELIED UPON AS CORRECTLY STATING THE REPRESENTATIONS OF THE DEVELOPER. FOR CORRECT REPRESENTATIONS, MAKE REFERENCE TO THIS WEBSITE AND TO THE DOCUMENTS REQUIRED BY SECTION 718.503, FLORIDA STATUTES, TO BE FURNISHED BY A DEVELOPER TO A BUYER OR LESSEE. In no event shall any solicitation, offer or sale of a unit in the condominium be made in, or to residents of, any state or country in which such activity would be unlawful. Stated square footages and dimensions are measured to the exterior boundaries of the exterior walls and the centerline of interior demising walls and in fact vary from the square footage and dimensions that would be determined by using the description and definition of the "Unit" set forth in the Declaration (which generally only includes the interior airspace between the perimeter walls and excludes all interior structural components and other common elements). This method is generally used in sales materials and is provided to allow a prospective buyer to compare the Units with units in other condominium projects that utilize the same method. Measurements of rooms set forth on this floor plan are generally taken at the farthest points of each given room (as if the room were a perfect rectangle), without regard for any cutouts or variations. Accordingly, the area of the actual room will typically be smaller than the product obtained by multiplying the stated length and width. All balcony areas are to interior glass face of guardrail (not construction gross). All dimensions are estimates which will vary with actual construction, and all floor plans, specifications and other development plans are subject to change and will not necessarily accurately reflect the final plans and specifications for The Residences. If circumstances arise which, in Developer's opinion, warrant changes of suppliers, manufacturers, brand names, models or items, or if Developer elects to omit certain items, Developer may modify the list of standard features or make substitutions for equipment, material, appliances, brands, models, etc., with items which in Developer's opinion are of equal or better quality (regardless of cost). All descriptions of furniture, appliances, and other matters of detail, including, without limitation, items of finish and decoration, are conceptual only and are not necessarily included in each unit. Furnishings are only included if and to the extent provided in your purchase agreement. Prices, features, amenities and other descriptions are preliminary and are subject to change without notice, as provided in your purchase agreement. Prices do not include optional features or premiums for upgraded units. Price changes may occur that are not yet reflected herein. Buyers should check with the sales center for the most current pricing. The project graphics, renderings and text provided herein are copyrighted works owned by the Developer. All rights reserved. Unauthorized reproduction, display or other dissemination of such materials is strictly prohibited and constitutes copyright infringement.



North Tower—Hotel Residences

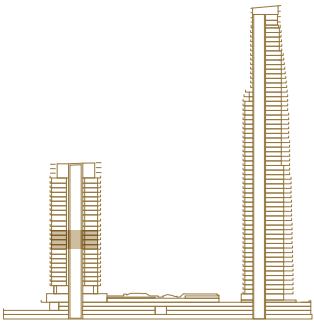
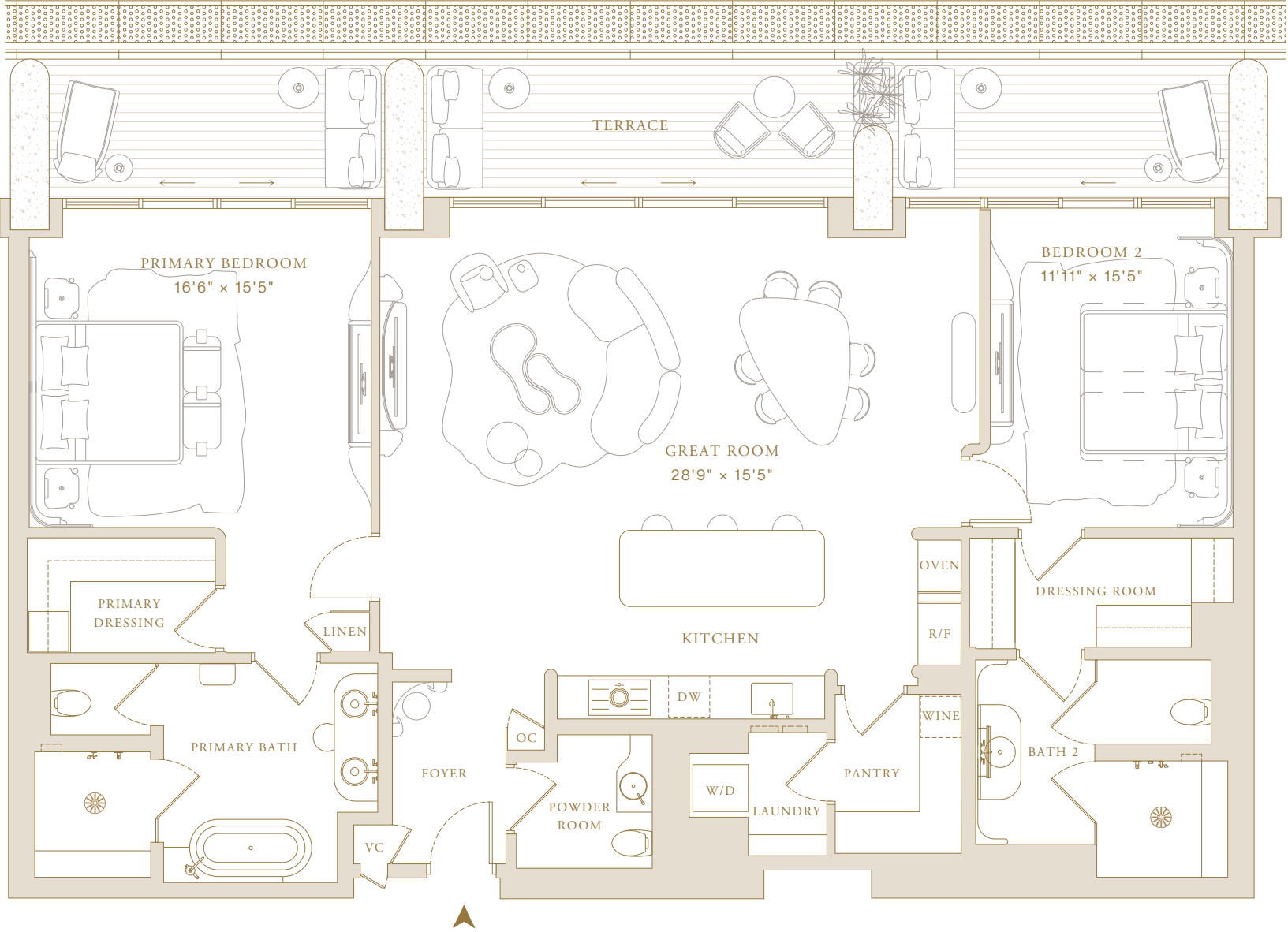
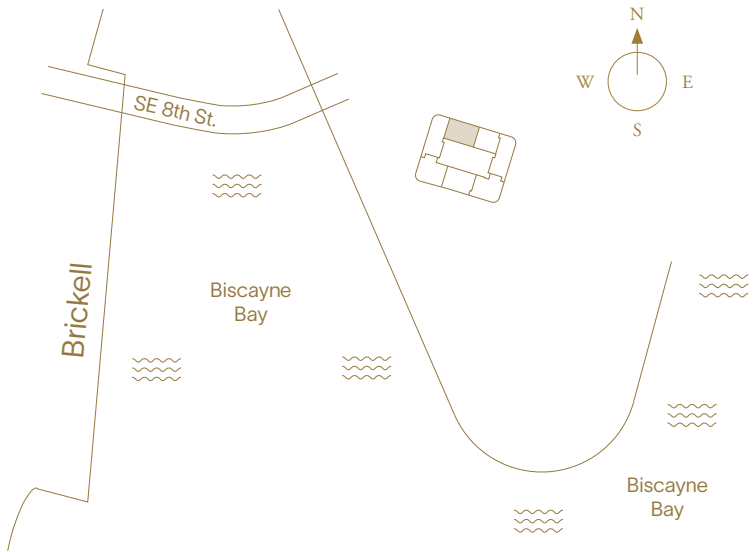
Residence 05

Levels 15–18

- 2 Bedrooms
- 2 Bathrooms
- Powder Room

Indoor Area
1,949 SF (181 SM)

- Features
- Fully Fitted Out Residence Including Furniture
 - Valet Closet for Delivery/Services by Mandarin Oriental
 - Entry Foyer
 - Owner’s Closet
 - Molteni&C Kitchen with Gaggenau Appliances
 - Walk-In Pantry
 - Fully Finished Closet
 - Soaking Tub in Primary Bathroom
 - Laundry Room
 - Dedicated Storage



This project is being developed by OID T2 Developer LLC, a Florida limited liability company ("Developer"), which has a limited right to use the trademarked names and logos of Swire Properties and Mandarin Oriental Hotel Group. The Residences at Mandarin Oriental, Miami ("The Residences") are not developed, sponsored, owned, offered or sold by Mandarin Oriental Hotel Group or any affiliate thereof (MOHG), and MOHG makes no representation, warranty or guaranty of any kind regarding The Residences. Developer and owners of The Residences use the Mandarin Oriental name and trademarks subject to the terms of revocable licenses from MOHG which may expire or be terminated. ORAL REPRESENTATIONS CANNOT BE RELIED UPON AS CORRECTLY STATING THE REPRESENTATIONS OF THE DEVELOPER. FOR CORRECT REPRESENTATIONS, MAKE REFERENCE TO THIS WEBSITE AND TO THE DOCUMENTS REQUIRED BY SECTION 718.503, FLORIDA STATUTES, TO BE FURNISHED BY A DEVELOPER TO A BUYER OR LESSEE. In no event shall any solicitation, offer or sale of a unit in the condominium be made in, or to residents of, any state or country in which such activity would be unlawful. Stated square footages and dimensions are measured to the exterior boundaries of the exterior walls and the centerline of interior demising walls and in fact vary from the square footage and dimensions that would be determined by using the description and definition of the "Unit" set forth in the Declaration (which generally only includes the interior airspace between the perimeter walls and excludes all interior structural components and other common elements). This method is generally used in sales materials and is provided to allow a prospective buyer to compare the Units with units in other condominium projects that utilize the same method. Measurements of rooms set forth on this floor plan are generally taken at the farthest points of each given room (as if the room were a perfect rectangle), without regard for any cutouts or variations. Accordingly, the area of the actual room will typically be smaller than the product obtained by multiplying the stated length and width. All balcony areas are to interior glass face of guardrail (not construction gross). All dimensions are estimates which will vary with actual construction, and all floor plans, specifications and other development plans are subject to change and will not necessarily accurately reflect the final plans and specifications for The Residences. If circumstances arise which, in Developer's opinion, warrant changes of suppliers, manufacturers, brand names, models or items, or if Developer elects to omit certain items, Developer may modify the list of standard features or make substitutions for equipment, material, appliances, brands, models, etc., with items which in Developer's opinion are of equal or better quality (regardless of cost). All descriptions of furniture, appliances, and other matters of detail, including, without limitation, items of finish and decoration, are conceptual only and are not necessarily included in each unit. Furnishings are only included if and to the extent provided in your purchase agreement. Prices, features, amenities and other descriptions are preliminary and are subject to change without notice, as provided in your purchase agreement. Prices do not include optional features or premiums for upgraded units. Price changes may occur that are not yet reflected herein. Buyers should check with the sales center for the most current pricing. The project graphics, renderings and text provided herein are copyrighted works owned by the Developer. All rights reserved. Unauthorized reproduction, display or other dissemination of such materials is strictly prohibited and constitutes copyright infringement.



North Tower—Hotel Residences

Residence 06

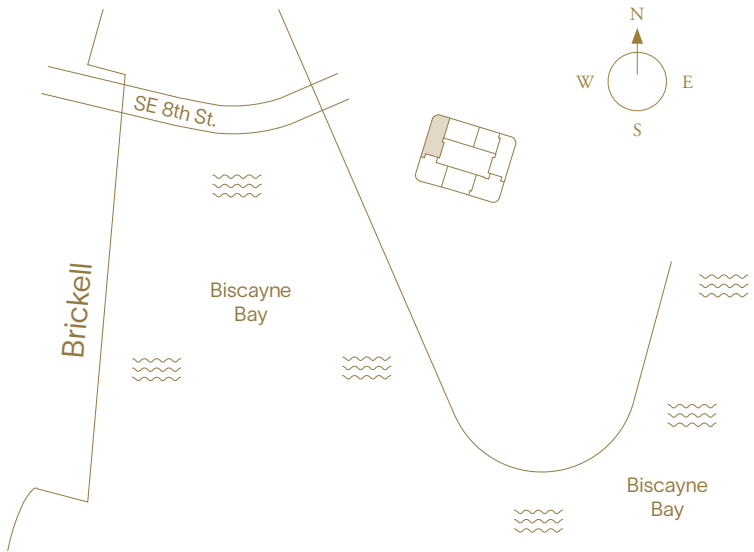
Levels 15–18

- 2 Bedrooms
- 2 Bathrooms
- Powder Room

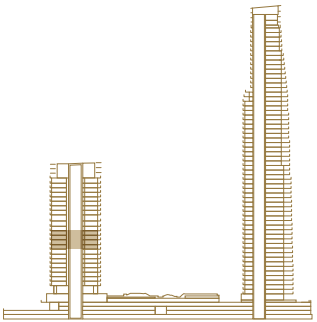
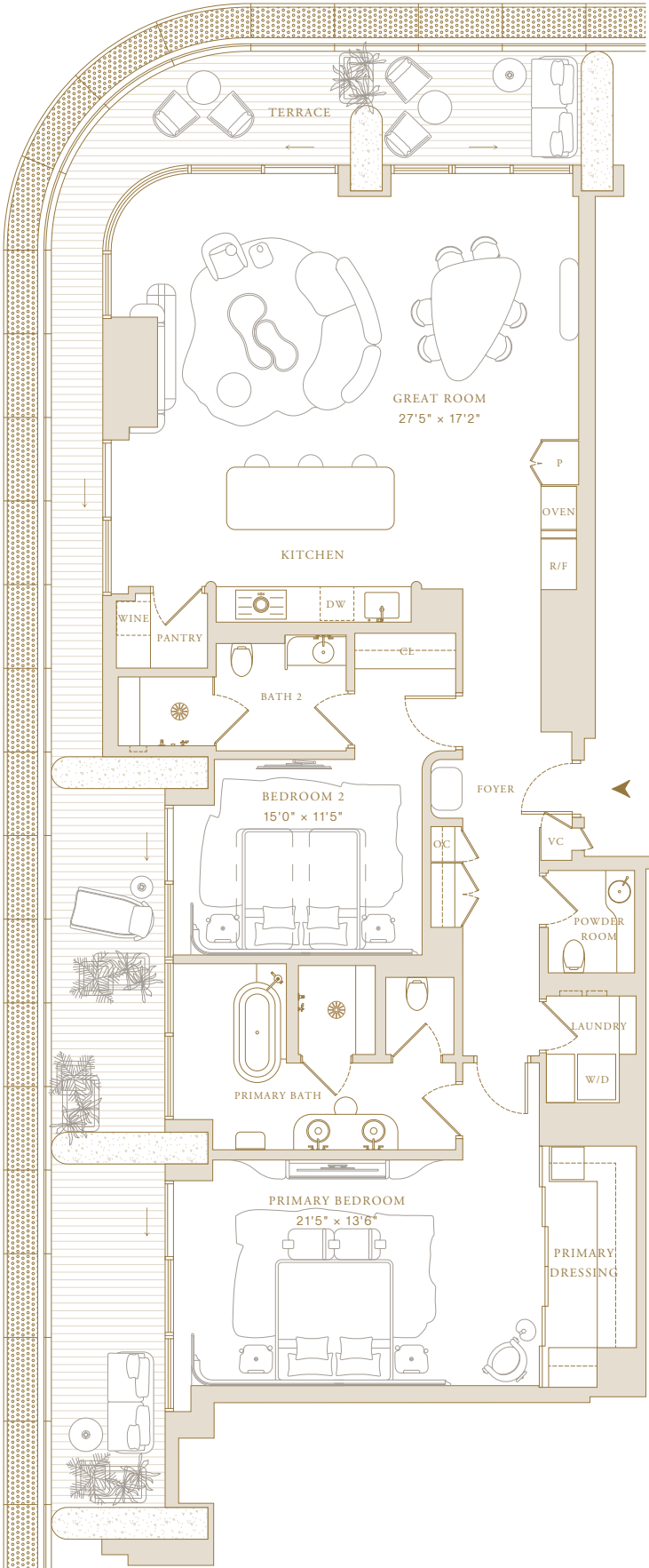
Indoor Area
1,990 SF (185 SM)

Features

- Fully Fitted Out Residence Including Furniture
- Valet Closet for Delivery/Services by Mandarin Oriental
- Entry Foyer
- Owner’s Closet
- Molteni&C Kitchen with Gaggenau Appliances
- Fully Finished Closet with Safe
- Soaking Tub in Primary Bathroom
- Laundry Room
- Dedicated Storage



This project is being developed by OID T2 Developer LLC, a Florida limited liability company ("Developer"), which has a limited right to use the trademarked names and logos of Swire Properties and Mandarin Oriental Hotel Group. The Residences at Mandarin Oriental, Miami ("The Residences") are not developed, sponsored, owned, offered or sold by Mandarin Oriental Hotel Group or any affiliate thereof (MOHG), and MOHG makes no representation, warranty or guaranty of any kind regarding The Residences. Developer and owners of The Residences use the Mandarin Oriental name and trademarks subject to the terms of revocable licenses from MOHG which may expire or be terminated. ORAL REPRESENTATIONS CANNOT BE RELIED UPON AS CORRECTLY STATING THE REPRESENTATIONS OF THE DEVELOPER. FOR CORRECT REPRESENTATIONS, MAKE REFERENCE TO THIS WEBSITE AND TO THE DOCUMENTS REQUIRED BY SECTION 718.503, FLORIDA STATUTES, TO BE FURNISHED BY A DEVELOPER TO A BUYER OR LESSEE. In no event shall any solicitation, offer or sale of a unit in the condominium be made in, or to residents of, any state or country in which such activity would be unlawful. Stated square footages and dimensions are measured to the exterior boundaries of the exterior walls and the centerline of interior demising walls and in fact vary from the square footage and dimensions that would be determined by using the description and definition of the "Unit" set forth in the Declaration (which generally only includes the interior airspace between the perimeter walls and excludes all interior structural components and other common elements). This method is generally used in sales materials and is provided to allow a prospective buyer to compare the Units with units in other condominium projects that utilize the same method. Measurements of rooms set forth on this floor plan are generally taken at the farthest points of each given room (as if the room were a perfect rectangle), without regard for any cutouts or variations. Accordingly, the area of the actual room will typically be smaller than the product obtained by multiplying the stated length and width. All balcony areas are to interior glass face of guardrail (not construction gross). All dimensions are estimates which will vary with actual construction, and all floor plans, specifications and other development plans are subject to change and will not necessarily accurately reflect the final plans and specifications for The Residences. If circumstances arise which, in Developer's opinion, warrant changes of suppliers, manufacturers, brand names, models or items, or if Developer elects to omit certain items, Developer may modify the list of standard features or make substitutions for equipment, material, appliances, brands, models, etc., with items which in Developer's opinion are of equal or better quality (regardless of cost). All descriptions of furniture, appliances, and other matters of detail, including, without limitation, items of finish and decoration, are conceptual only and are not necessarily included in each unit. Furnishings are only included if and to the extent provided in your purchase agreement. Prices, features, amenities and other descriptions are preliminary and are subject to change without notice, as provided in your purchase agreement. Prices do not include optional features or premiums for upgraded units. Price changes may occur that are not yet reflected herein. Buyers should check with the sales center for the most current pricing. The project graphics, renderings and text provided herein are copyrighted works owned by the Developer. All rights reserved. Unauthorized reproduction, display or other dissemination of such materials is strictly prohibited and constitutes copyright infringement.





South Tower—Penthouse Collection

Penthouse 01

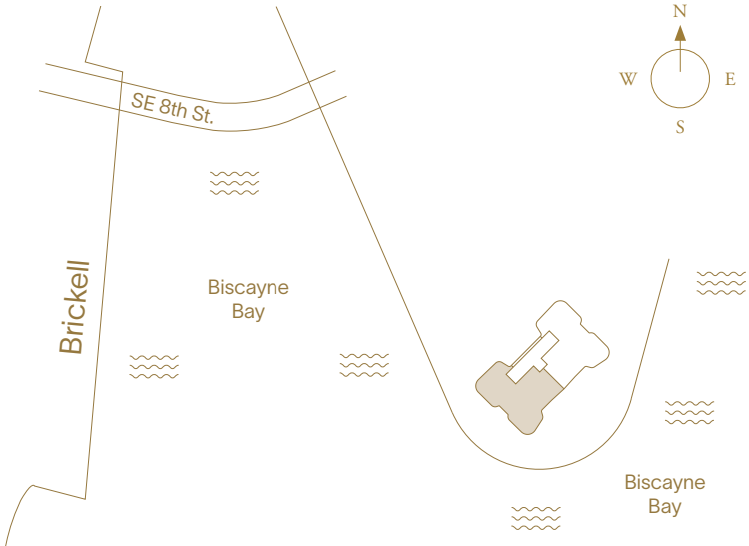
Lower Level

5 Bedrooms + Library
7 Bathrooms
3 Powder Rooms

| | |
|---|--|
| Indoor Area | Total Indoor (Both Levels) |
| 4,678 ft ² (435 m ²) | 7,920 ft ² (736 m ²) |
| Outdoor Area | Total Outdoor (Both Levels) |
| 2,665 ft ² (248 m ²) | 4,133 ft ² (384 m ²) |
| Total Area | Total Area (Both Levels) |
| 7,343 ft ² (683 m ²) | 12,053 ft ² (1,120 m ²) |

Features

Private Elevator and Entry Foyer
Double Door Entry
Molteni Kitchen with Gaggenau Appliances
Chef’s Kitchen
Primary Closet by Tristan Auer
Sauna
Wine Bar
Laundry Room
En-suite Staff Quarters
Private Storage Adjacent to Residence
Expansive Terraces
Outdoor Built-in Bar
Lap Pool



This project is being developed by affiliates of OID T1 Developer LLC, a Florida limited liability company ("Developer"), which has a limited right to use the trademarked names and logos of Swire Properties and Mandarin Oriental Hotel Group. The Residences at Mandarin Oriental, Miami ("The Residences") are not developed, sponsored, owned, offered or sold by Mandarin Oriental Hotel Group or any affiliate thereof (MOHG), and MOHG makes no representation, warranty or guaranty of any kind regarding The Residences. Developer and owners of The Residences use the Mandarin Oriental name and trademarks subject to the terms of revocable licenses from MOHG which may expire or be terminated. These materials are for the South Tower only and any and all depictions, renderings, descriptions, etc., of any additional improvements within the overall project, including, without limitation, an additional tower and amenities associated with such additional tower are subject to change at any time, without notice. Those additional improvements may not be available at the time of closing and/or may never be made available and shall not be relied upon in any manner. ORAL REPRESENTATIONS CANNOT BE RELIED UPON AS CORRECTLY STATING THE REPRESENTATIONS OF THE DEVELOPER. FOR CORRECT REPRESENTATIONS, MAKE REFERENCE TO THIS WEBSITE AND TO THE DOCUMENTS REQUIRED BY SECTION 718.503, FLORIDA STATUTES, TO BE FURNISHED BY A DEVELOPER TO A BUYER OR LESSEE. THE COMPLETE OFFERING TERMS ARE IN A CPS-12 APPLICATION AVAILABLE FROM THE OFFEROR. FILE NO. CP24-0048. WARNING: THE CALIFORNIA DEPARTMENT OF REAL ESTATE HAS NOT INSPECTED, EXAMINED, OR QUALIFIED THIS OFFERING. This advertisement is a solicitation for the sale of Units in Island Drive South Condominium, N.J. Registration No. 24-04-0007. This Condominium has been registered with the Massachusetts Board of Registration of Real Estate Brokers and Salespersons F-1294-01-01. Stated square footages and dimensions are measured to the exterior boundaries of the exterior walls and the centerline of interior demising walls and in fact vary from the square footage and dimensions that would be determined by using the description and definition of the "Unit" set forth in the Declaration (which generally only includes the interior airspace between the perimeter walls and excludes all interior structural components and other common elements). This method is generally used in sales materials and is provided to allow a prospective buyer to compare the Units with units in other condominium projects that utilize the same method. Measurements of rooms set forth on this floor plan are generally taken at the farthest points of each given room (as if the room were a perfect rectangle), without regard for any cutouts or variations. Accordingly, the area of the actual room will typically be smaller than the product obtained by multiplying the stated length and width. All balcony areas are to interior glass face of guardrail (not construction gross). All dimensions are estimates which will vary with actual construction, and all floor plans, specifications and other development plans are subject to change and will not necessarily accurately reflect the final plans and specifications for The Residences. Prices, features, amenities and other descriptions are preliminary and are subject to change without notice, as provided in your purchase agreement. Prices do not include optional features or premiums for upgraded units. Price changes may occur that are not yet reflected herein. Buyers should check with the sales center for the most current pricing. The project graphics, renderings and text provided herein are copyrighted works owned by the Developer. All rights reserved. Unauthorized reproduction, display or other dissemination of such materials is strictly prohibited and constitutes copyright infringement.



South Tower—Penthouse Collection

Penthouse 01

Upper Level

5 Bedrooms + Library

7 Bathrooms

3 Powder Rooms

Indoor Area

3,242 ft² (301 m²)

Outdoor Area

1,468 ft² (136 m²)

Total Area

4,710 ft² (438 m²)

Features

Private Elevator and Entry Foyer

Double Door Entry

Molteni Kitchen with Gaggenau Appliances

Chef's Kitchen

Primary Closet by Tristan Auer

Sauna

Wine Bar

Laundry Room

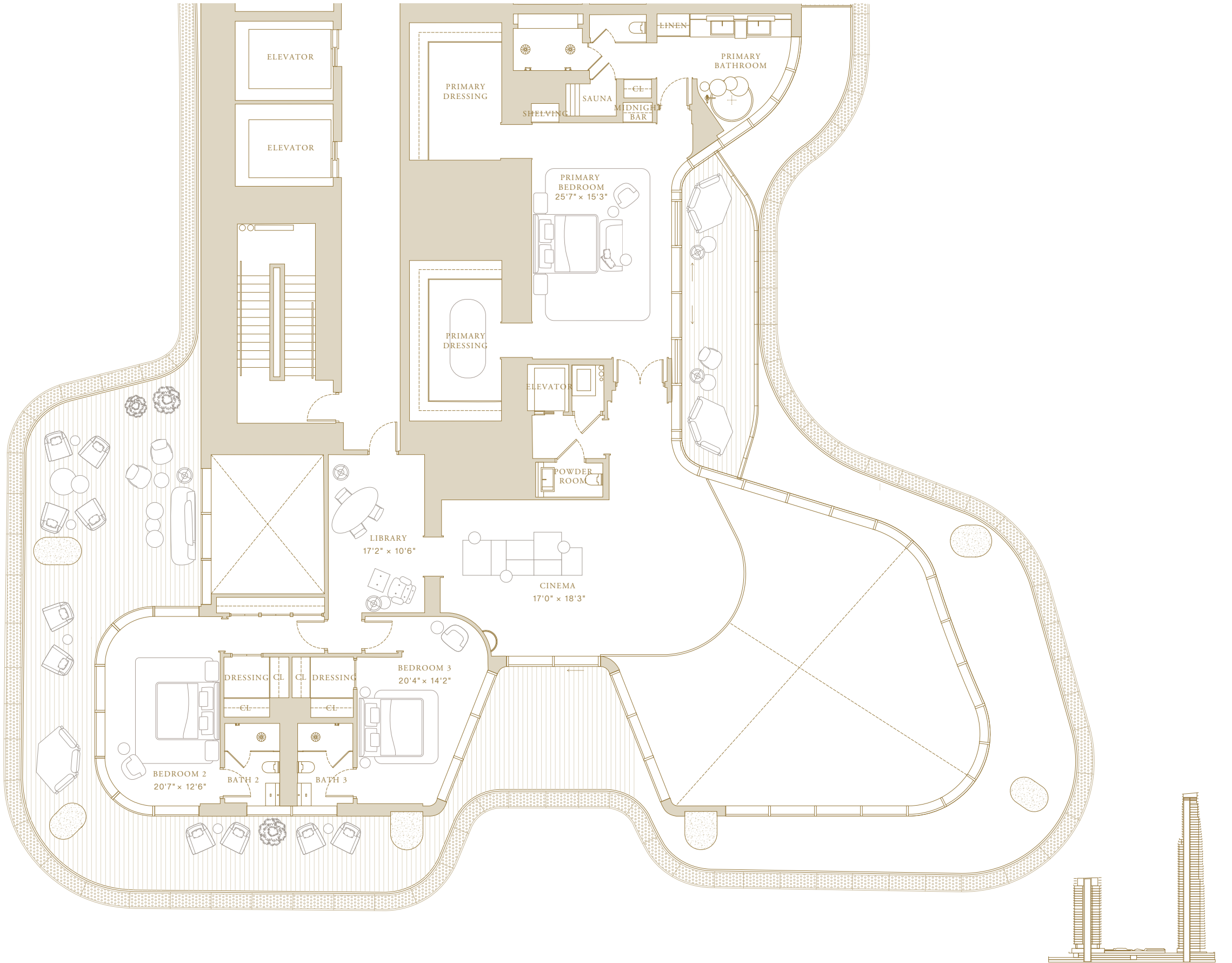
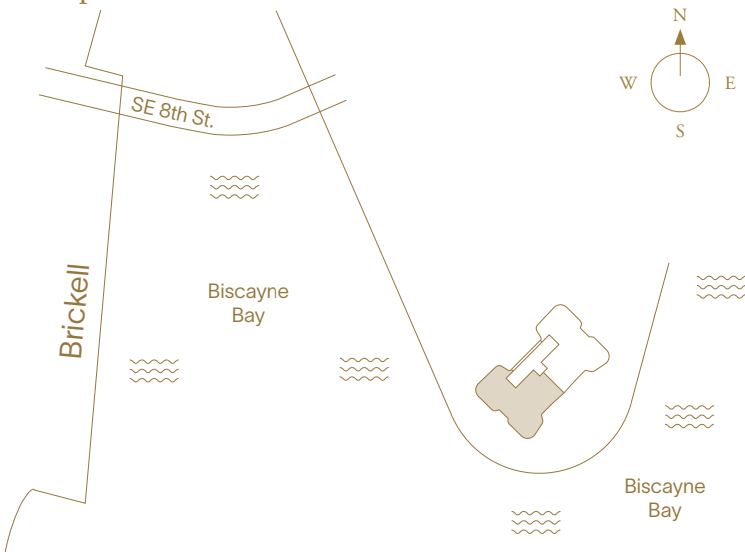
En-suite Staff Quarters

Private Storage Adjacent to Residence

Expansive Terraces

Outdoor Built-in Bar

Lap Pool



This project is being developed by affiliates of OID T1 Developer LLC, a Florida limited liability company ("Developer"), which has a limited right to use the trademarked names and logos of Swire Properties and Mandarin Oriental Hotel Group. The Residences at Mandarin Oriental, Miami ("The Residences") are not developed, sponsored, owned, offered or sold by Mandarin Oriental Hotel Group or any affiliate thereof (MOHG), and MOHG makes no representation, warranty or guaranty of any kind regarding The Residences. Developer and owners of The Residences use the Mandarin Oriental name and trademarks subject to the terms of revocable licenses from MOHG which may expire or be terminated. These materials are for the South Tower only and any and all depictions, renderings, descriptions, etc., of any additional improvements within the overall project, including, without limitation, an additional tower and amenities associated with such additional tower are subject to change at any time, without notice. Those additional improvements may not be available at the time of closing and/or may never be made available and shall not be relied upon in any manner. ORAL REPRESENTATIONS CANNOT BE RELIED UPON AS CORRECTLY STATING THE REPRESENTATIONS OF THE DEVELOPER. FOR CORRECT REPRESENTATIONS, MAKE REFERENCE TO THIS WEBSITE AND TO THE DOCUMENTS REQUIRED BY SECTION 718.503, FLORIDA STATUTES, TO BE FURNISHED BY A DEVELOPER TO A BUYER OR LESSEE. THE COMPLETE OFFERING TERMS ARE IN A CPS-12 APPLICATION AVAILABLE FROM THE OFFEROR. FILE NO. CP24-0048. WARNING: THE CALIFORNIA DEPARTMENT OF REAL ESTATE HAS NOT INSPECTED, EXAMINED, OR QUALIFIED THIS OFFERING. This advertisement is a solicitation for the sale of Units in Island Drive South Condominium, N.J. Registration No. 24-04-0007. This Condominium has been registered with the Massachusetts Board of Registration of Real Estate Brokers and Salespersons F-1294-01-01. Stated square footages and dimensions are measured to the exterior boundaries of the exterior walls and the centerline of interior demising walls and in fact vary from the square footage and dimensions that would be determined by using the description and definition of the "Unit" set forth in the Declaration (which generally only includes the interior airspace between the perimeter walls and excludes all interior structural components and other common elements). This method is generally used in sales materials and is provided to allow a prospective buyer to compare the Units with units in other condominium projects that utilize the same method. Measurements of rooms set forth on this floor plan are generally taken at the farthest points of each given room (as if the room were a perfect rectangle), without regard for any cutouts or variations. Accordingly, the area of the actual room will typically be smaller than the product obtained by multiplying the stated length and width. All balcony areas are to interior glass face of guardrail (not construction gross). All dimensions are estimates which will vary with actual construction, and all floor plans, specifications and other development plans are subject to change and will not necessarily accurately reflect the final plans and specifications for The Residences. Prices, features, amenities and other descriptions are preliminary and are subject to change without notice, as provided in your purchase agreement. Prices do not include optional features or premiums for upgraded units. Price changes may occur that are not yet reflected herein. Buyers should check with the sales center for the most current pricing. The project graphics, renderings and text provided herein are copyrighted works owned by the Developer. All rights reserved. Unauthorized reproduction, display or other dissemination of such materials is strictly prohibited and constitutes copyright infringement.



South Tower — PenthouseCollection

Penthouse 02

Lower Level

5 Bedrooms + Library

7 Bathrooms

3 Powder Rooms

Indoor Area

4,693 ft² (436 m²)

Outdoor Area

2,667 ft² (248 m²)

Total Area

7,360 ft² (684 m²)

Total Indoor (Both Levels)

7,942 ft² (738 m²)

Total Outdoor (Both Levels)

3,872 ft² (360 m²)

Total Area (Both Levels)

11,814 ft² (1,098 m²)

Features

Private Elevator and Entry Foyer

Double Door Entry

Molteni Kitchen with Gaggenau Appliances

Chef's Kitchen

Primary Closet by Tristan Auer

Sauna

Wine Bar

Laundry Room

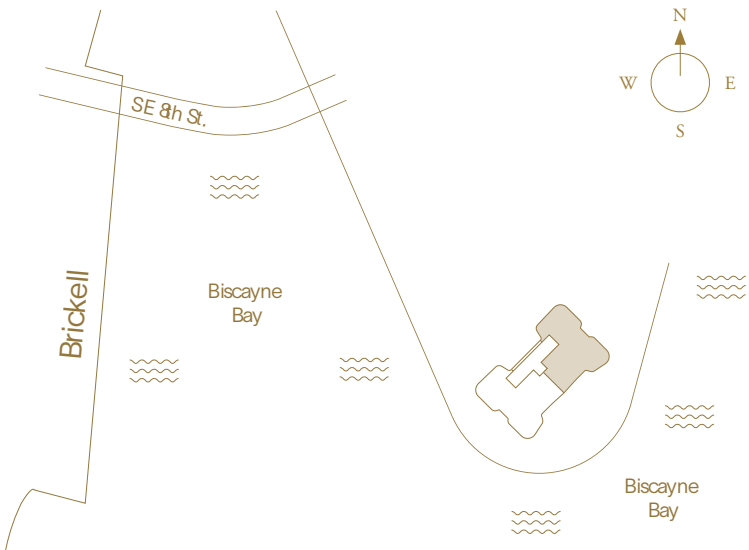
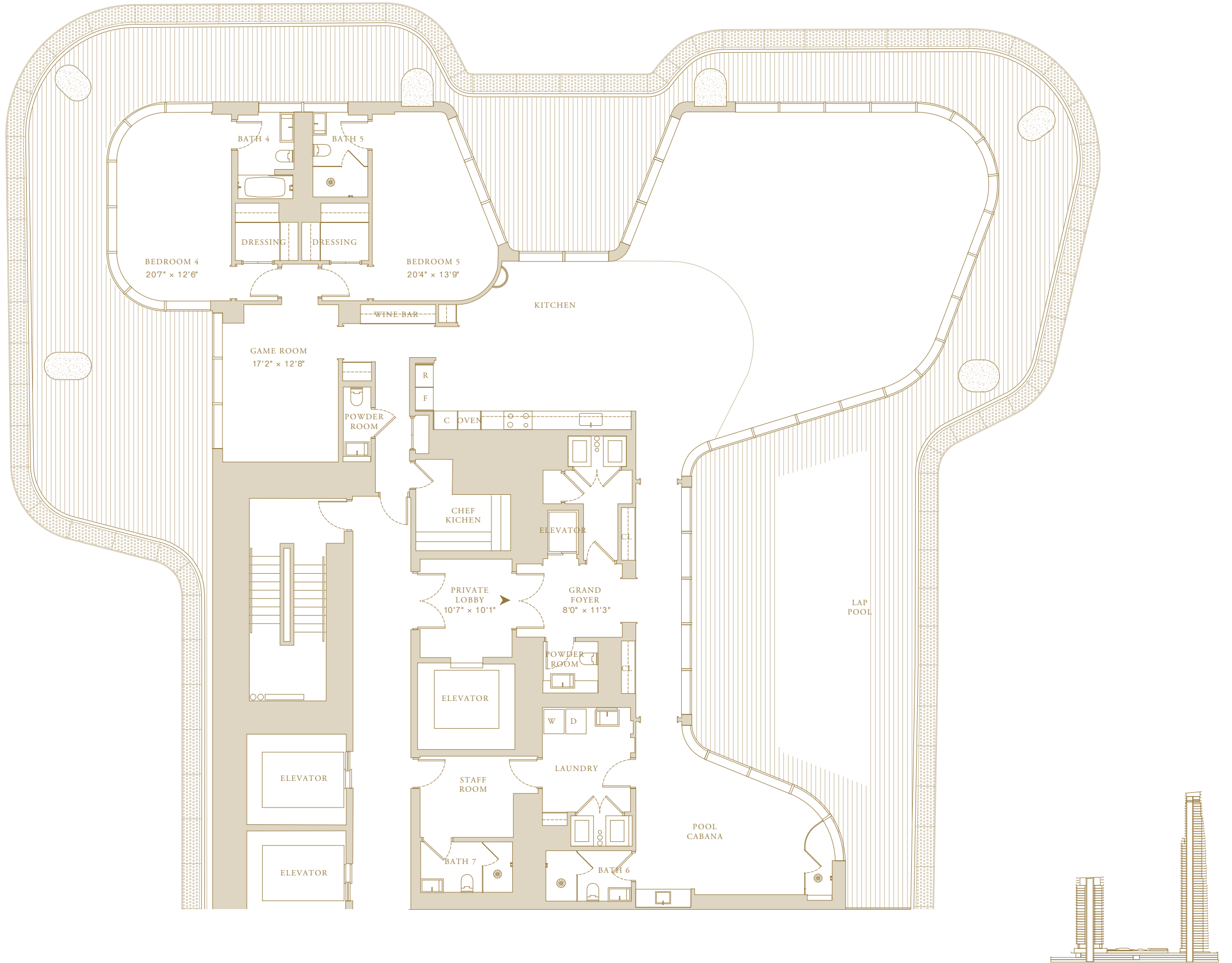
En-suite Staff Quarters

Private Storage Adjacent to Residence

Expansive Terraces

Outdoor Built-in Bar

Lap Pool



This project is being developed by affiliates of OID T1 Developer LLC, a Florida limited liability company ("Developer"), which has a limited right to use the trademarked names and logos of Swire Properties and Mandarin Oriental Hotel Group. The Residences at Mandarin Oriental, Miami ("The Residences") are not developed, sponsored, owned, offered or sold by Mandarin Oriental Hotel Group or any affiliate thereof (MOHG), and MOHG makes no representation, warranty or guaranty of any kind regarding The Residences. Developer and owners of The Residences use the Mandarin Oriental name and trademarks subject to the terms of revocable licenses from MOHG which may expire or be terminated. These materials are for the South Tower only and any and all depictions, renderings, descriptions, etc., of any additional improvements within the overall project, including, without limitation, an additional tower and amenities associated with such additional tower are subject to change at any time, without notice. Those additional improvements may not be available at the time of closing and/or may never be made available and shall not be relied upon in any manner. ORAL REPRESENTATIONS CANNOT BE RELIED UPON AS CORRECTLY STATING THE REPRESENTATIONS OF THE DEVELOPER. FOR CORRECT REPRESENTATIONS, MAKE REFERENCE TO THIS WEBSITE AND TO THE DOCUMENTS REQUIRED BY SECTION 718.503, FLORIDA STATUTES, TO BE FURNISHED BY A DEVELOPER TO A BUYER OR LESSEE. THE COMPLETE OFFERING TERMS ARE IN A CPS-12 APPLICATION AVAILABLE FROM THE OFFEROR. FILE NO. CP24-0048. WARNING: THE CALIFORNIA DEPARTMENT OF REAL ESTATE HAS NOT INSPECTED, EXAMINED, OR QUALIFIED THIS OFFERING. This advertisement is a solicitation for the sale of Units in Island Drive South Condominium; N.J. Registration No. 24-04-0007. This Condominium has been registered with the Massachusetts Board of Registration of Real Estate Brokers and Salespersons F-1294-01-01. Stated square footages and dimensions are measured to the exterior boundaries of the exterior walls and the centerline of interior demising walls and in fact vary from the square footage and dimensions that would be determined by using the description and definition of the "Unit" set forth in the Declaration (which generally only includes the interior airspace between the perimeter walls and excludes all interior structural components and other common elements). This method is generally used in sales materials and is provided to allow a prospective buyer to compare the Units with units in other condominium projects that utilize the same method. Measurements of rooms set forth on this floor plan are generally taken at the farthest points of each given room (as if the room were a perfect rectangle), without regard for any cutouts or variations. Accordingly, the area of the actual room will typically be smaller than the product obtained by multiplying the stated length and width. All balcony areas are to interior glass face of guardrail (not construction gross). All dimensions are estimates which will vary with actual construction, and all floor plans, specifications and other development plans are subject to change and will not necessarily accurately reflect the final plans and specifications for The Residences. Prices, features, amenities and other descriptions are preliminary and are subject to change without notice, as provided in your purchase agreement. Prices do not include optional features or premiums for upgraded units. Price changes may occur that are not yet reflected herein. Buyers should check with the sales center for the most current pricing. The project graphics, renderings and text provided herein are copyrighted works owned by the Developer. All rights reserved. Unauthorized reproduction, display or other dissemination of such materials is strictly prohibited and constitutes copyright infringement.



South Tower — PenthouseCollection

Penthouse 02

Upper Level

5 Bedrooms + Library

7 Bathrooms

3 Powder Room

Indoor Area

3,249 ft² (302 m²)

Outdoor Area

1,205 ft² (112 m²)

Total Area

4,454 ft² (414 m²)

Features

Private Elevator and Entry Foyer

Double Door Entry

Molteni Kitchen with Gaggenau Appliances

Chef's Kitchen

Primary Closet by Tristan Auer

Sauna

Wine Bar

Laundry Room

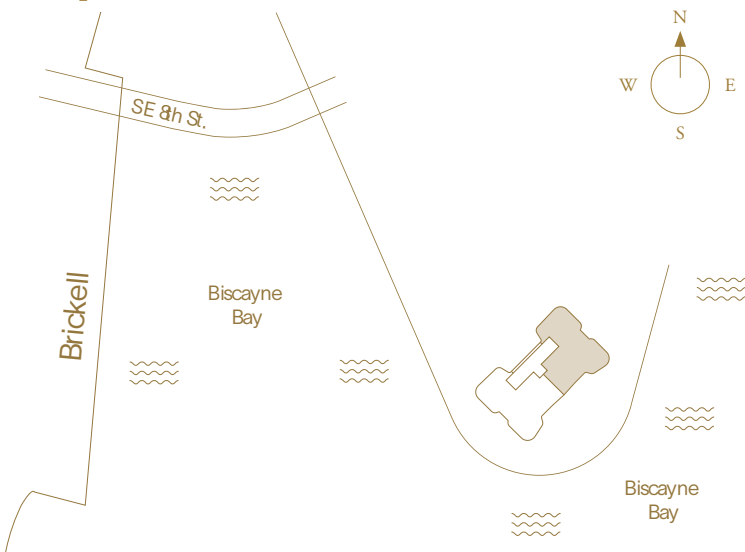
En-suite Staff Quarters

Private Storage Adjacent to Residence

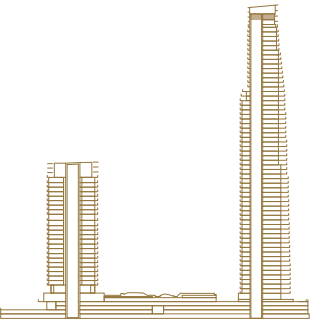
Expansive Terraces

Outdoor Built-in Bar

Lap Pool



This project is being developed by affiliates of OI D T1 Developer LLC, a Florida limited liability company ("Developer"), which has a limited right to use the trademarked names and logos of Swire Properties and Mandarin Oriental Hotel Group. The Residences at Mandarin Oriental, Miami ("The Residences") are not developed, sponsored, owned, offered or sold by Mandarin Oriental Hotel Group or any affiliate thereof (MOHG), and MOHG makes no representation, warranty or guaranty of any kind regarding The Residences. Developer and owners of The Residences use the Mandarin Oriental name and trademarks subject to the terms of revocable licenses from MOHG which may expire or be terminated. These materials are for the South Tower only and any and all depictions, renderings, descriptions, etc., of any additional improvements within the overall project, including, without limitation, an additional tower and amenities associated with such additional tower are subject to change at any time, without notice. Those additional improvements may not be available at the time of closing and/or may never be made available and shall not be relied upon in any manner. ORAL REPRESENTATIONS CANNOT BE RELIED UPON AS CORRECTLY STATING THE REPRESENTATIONS OF THE DEVELOPER. FOR CORRECT REPRESENTATIONS, MAKE REFERENCE TO THIS WEBSITE AND TO THE DOCUMENTS REQUIRED BY SECTION 718.503, FLORIDA STATUTES, TO BE FURNISHED BY A DEVELOPER TO A BUYER OR LESSEE. THE COMPLETE OFFERING TERMS ARE IN A CPS-12 APPLICATION AVAILABLE FROM THE OFFEROR. FILE NO. CP24-0048. WARNING: THE CALIFORNIA DEPARTMENT OF REAL ESTATE HAS NOT INSPECTED, EXAMINED, OR QUALIFIED THIS OFFERING. This advertisement is a solicitation for the sale of Units in Island Drive South Condominium; N.J. Registration No. 24-04-0007. This Condominium has been registered with the Massachusetts Board of Registration of Real Estate Brokers and Salespersons F-1294-01-01. Stated square footages and dimensions are measured to the exterior boundaries of the exterior walls and the centerline of interior demising walls and in fact vary from the square footage and dimensions that would be determined by using the description and definition of the "Unit" set forth in the Declaration (which generally only includes the interior airspace between the perimeter walls and excludes all interior structural components and other common elements). This method is generally used in sales materials and is provided to allow a prospective buyer to compare the Units with units in other condominium projects that utilize the same method. Measurements of rooms set forth on this floor plan are generally taken at the farthest points of each given room (as if the room were a perfect rectangle), without regard for any cutouts or variations. Accordingly, the area of the actual room will typically be smaller than the product obtained by multiplying the stated length and width. All balcony areas are to interior glass face of guardrail (not construction gross). All dimensions are estimates which will vary with actual construction, and all floor plans, specifications and other development plans are subject to change and will not necessarily accurately reflect the final plans and specifications for The Residences. Prices, features, amenities and other descriptions are preliminary and are subject to change without notice, as provided in your purchase agreement. Prices do not include optional features or premiums for upgraded units. Price changes may occur that are not yet reflected herein. Buyers should check with the sales center for the most current pricing. The project graphics, renderings and text provided herein are copyrighted works owned by the Developer. All rights reserved. Unauthorized reproduction, display or other dissemination of such materials is strictly prohibited and constitutes copyright infringement.



THE KNIGHTSBRIDGE PENTHOUSE

LEVEL 1

Principal Suite + 3 Bedrooms
6 Bathrooms
Powder Room

Indoor Area
7965 ft² (740 m²)

Features

- Private Elevator and Entry Foyer
- Bespoke Formal Kitchen with Gaggenau Appliances
- Feature Bar
- Outdoor Kitchen and Dining
- Chef’s Kitchen and Pantry
- Guest Bedroom 1 (or Media Room) with Ensuite
- Guest Bedroom 2 with Ensuite
- Staff Quarters with Ensuite
- Laundry Room
- Private Glass Elevator and Foyer
- Formal Dining
- Double Volume Formal Piano Lounge
- Expansive Wrap-around Terraces

- Wellness Wing:
- Himalayan Salt Wall Sauna
 - Fully Equipped Indoor Gym
 - Light Therapy Shower
 - Private Outdoor Lap Pool



This project is being developed by OID T1 Developer LLC, a Florida limited liability company (“Developer”), which has a limited right to use the trademarked names and logos of Swire Properties, Harrods Interior Design and Mandarin Oriental Hotel Group. The Residences at Mandarin Oriental, Miami (“The Residences”) are not developed, sponsored, owned, offered or sold by Mandarin Oriental Hotel Group or any affiliate thereof (MOHG) or Harrods Interior Design (Harrods), and MOHG and Harrods make no representation, warranty or guaranty of any kind regarding The Residences. Developer and owners of The Residences use the Mandarin Oriental name and trademarks subject to the terms of revocable licenses from MOHG and Harrods which may expire or be terminated. This advertisement is for the South Tower only and any and all depictions, renderings, descriptions, etc., of any additional improvements within the overall project, including, without limitation, an additional tower and amenities associated with such additional tower are subject to change at any time, without notice. Those additional improvements may not be available at the time of closing and/or may never be made available and shall not be relied upon in any manner. ORAL REPRESENTATIONS CANNOT BE RELIED UPON AS CORRECTLY STATING THE REPRESENTATIONS OF THE DEVELOPER. FOR CORRECT REPRESENTATIONS, MAKE REFERENCE TO THIS WEBSITE AND TO THE DOCUMENTS REQUIRED BY SECTION 718.503, FLORIDA STATUTES, TO BE FURNISHED BY A DEVELOPER TO A BUYER OR LESSEE. THE COMPLETE OFFERING TERMS ARE IN A CPS-12 APPLICATION AVAILABLE FROM THE OFFEROR. FILE NO. CP24-0048. WARNING: THE CALIFORNIA DEPARTMENT OF REAL ESTATE HAS NOT INSPECTED, EXAMINED, OR QUALIFIED THIS OFFERING. This advertisement is a solicitation for the sale of Units in Island Drive South Condominium; N.J. Registration No. 24-04-0007. This Condominium has been registered with the Massachusetts Board of Registration of Real Estate Brokers and Salespersons F-1294-01-01. In no event shall any solicitation, offer or sale of a unit in The Residences be made in, or to residents of, any state or country in which such activity would be unlawful. These images are conceptual only and are for the convenience of reference. They should not be relied upon as representations, express or implied, of the final detail of The Residences. The Developer expressly reserves the right to make modifications, revisions and changes it deems desirable in its sole and absolute discretion. All improvements, designs and construction are subject to first obtaining the appropriate federal, state and local permits and approvals for same. Stated square footages and dimensions are measured to the exterior boundaries of the exterior walls and the centerline of interior demising walls and in fact vary from the square footage and dimensions that would be determined by using the description and definition of the “Unit” set forth in the Declaration (which generally only includes the interior airspace between the perimeter walls and excludes all interior structural components and other common elements). This method is generally used in sales materials and is provided to allow a prospective buyer to compare the Units with units in other condominium projects that utilize the same method. Measurements of rooms set forth on this floor plan are generally taken at the farthest points of each given room (as if the room were a perfect rectangle), without regard for any cutouts or variations. Accordingly, the area of the actual room will typically be smaller than the product obtained by multiplying the stated length and width. All balcony areas are to interior glass face of guardrail (not construction gross). Certain items, if included with the unit, such as tile, marble, stone, granite, cabinets, wood, stain, grout, wall and ceiling textures, mica and carpeting, are subject to size and color variations, grain and quality variations, and may vary in accordance with price, availability and changes by manufacturer from those shown or described. All depictions of furniture, appliances, counters, soffits, floor coverings and other matters of detail, including, without limitation, items of finish and decoration, are conceptual only and are not necessarily included in each unit. Furnishings are only included if and to the extent provided in your purchase agreement. No guarantees or representations whatsoever are made that existing or future views of and from the project and surrounding areas depicted by artist’s conceptual renderings or otherwise described herein, will be provided or, if provided, will be as depicted or described herein. All prices are subject to change at any time and without notice, and do not include optional features or premiums for upgraded units. Prices quoted may be for raw spaces only and from time to time, price changes may have occurred that are not yet reflected herein. Please check with the official sales center for most current pricing. The project graphics, renderings and text provided herein are copyrighted works owned by the Developer. Unauthorized reproduction, display or other dissemination of such materials is strictly prohibited and constitutes copyright infringement. All rights reserved.🏠

THE KNIGHTSBRIDGE PENTHOUSE

LEVEL 2

Principal Suite + 3 Bedrooms
6 Bathrooms
Powder Room

Indoor Area
7965 ft² (740 m²)

Features

Private Glass Elevator and Foyer
Private Lounge with Outdoor Terrace
Hidden Speakeasy Bar
Private Office overlooking Level 1
Guest Bedroom 3 with Ensuite
Guest Bedroom 4 with Ensuite
Principal Bedroom with Private Vault
Ensuite with Stone Bath and Double Shower
His and Hers Bespoke Dressing Rooms
Expansive Terraces
Rear Terrace with Plunge Pool

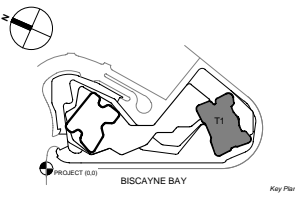
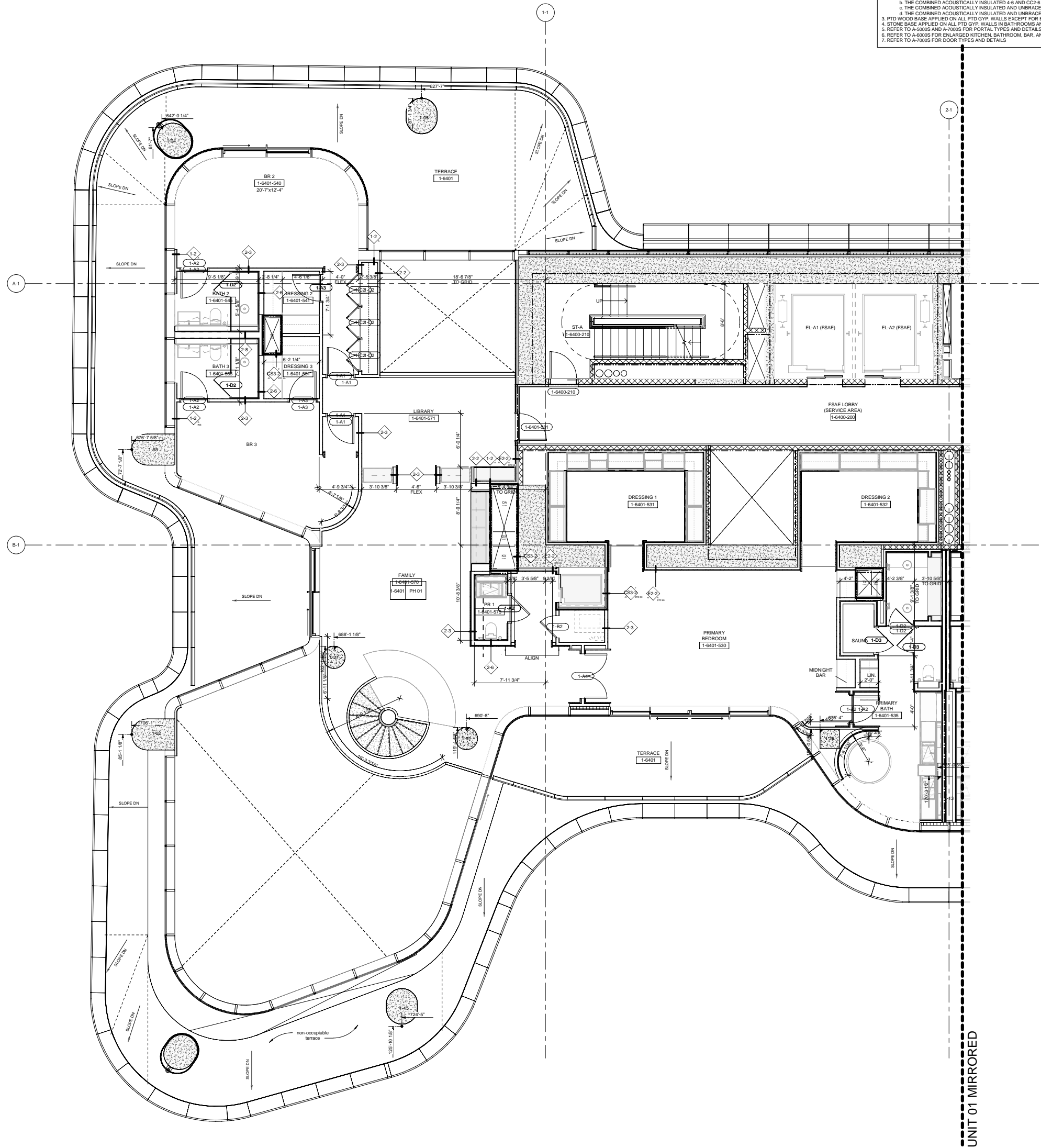


This project is being developed by OID T1 Developer LLC, a Florida limited liability company (“Developer”), which has a limited right to use the trademarked names and logos of Swire Properties, Harrods Interior Design and Mandarin Oriental Hotel Group. The Residences at Mandarin Oriental, Miami (“The Residences”) are not developed, sponsored, owned, offered or sold by Mandarin Oriental Hotel Group or any affiliate thereof (MOHG) or Harrods Interior Design (Harrods), and MOHG and Harrods make no representation, warranty or guaranty of any kind regarding The Residences. Developer and owners of The Residences use the Mandarin Oriental name and trademarks subject to the terms of revocable licenses from MOHG and Harrods which may expire or be terminated. This advertisement is for the South Tower only and any and all depictions, renderings, descriptions, etc., of any additional improvements within the overall project, including, without limitation, an additional tower and amenities associated with such additional tower are subject to change at any time, without notice. Those additional improvements may not be available at the time of closing and/or may never be made available and shall not be relied upon in any manner. ORAL REPRESENTATIONS CANNOT BE RELIED UPON AS CORRECTLY STATING THE REPRESENTATIONS OF THE DEVELOPER. FOR CORRECT REPRESENTATIONS, MAKE REFERENCE TO THIS WEBSITE AND TO THE DOCUMENTS REQUIRED BY SECTION 718.503, FLORIDA STATUTES, TO BE FURNISHED BY A DEVELOPER TO A BUYER OR LESSEE. THE COMPLETE OFFERING TERMS ARE IN A CPS-12 APPLICATION AVAILABLE FROM THE OFFEROR. FILE NO. CP24-0048. WARNING: THE CALIFORNIA DEPARTMENT OF REAL ESTATE HAS NOT INSPECTED, EXAMINED, OR QUALIFIED THIS OFFERING. This advertisement is a solicitation for the sale of Units in Island Drive South Condominium; N.J. Registration No. 24-04-0007. This Condominium has been registered with the Massachusetts Board of Registration of Real Estate Brokers and Salespersons F-1294-01-01. In no event shall any solicitation, offer or sale of a unit in The Residences be made in, or to residents of, any state or country in which such activity would be unlawful. These images are conceptual only and are for the convenience of reference. They should not be relied upon as representations, express or implied, of the final detail of The Residences. The Developer expressly reserves the right to make modifications, revisions and changes it deems desirable in its sole and absolute discretion. All improvements, designs and construction are subject to first obtaining the appropriate federal, state and local permits and approvals for same. Stated square footages and dimensions are measured to the exterior boundaries of the exterior walls and the centerline of interior demising walls and in fact vary from the square footage and dimensions that would be determined by using the description and definition of the “Unit” set forth in the Declaration (which generally only includes the interior airspace between the perimeter walls and excludes all interior structural components and other common elements). This method is generally used in sales materials and is provided to allow a prospective buyer to compare the Units with units in other condominium projects that utilize the same method. Measurements of rooms set forth on this floor plan are generally taken at the farthest points of each given room (as if the room were a perfect rectangle), without regard for any cutouts or variations. Accordingly, the area of the actual room will typically be smaller than the product obtained by multiplying the stated length and width. All balcony areas are to interior glass face of guardrail (not construction gross). Certain items, if included with the unit, such as tile, marble, stone, granite, cabinets, wood, stain, grout, wall and ceiling textures, mica and carpeting, are subject to size and color variations, grain and quality variations, and may vary in accordance with price, availability and changes by manufacturer from those shown or described. All depictions of furniture, appliances, counters, soffits, floor coverings and other matters of detail, including, without limitation, items of finish and decoration, are conceptual only and are not necessarily included in each unit. Furnishings are only included if and to the extent provided in your purchase agreement. No guarantees or representations whatsoever are made that existing or future views of and from the project and surrounding areas depicted by artist’s conceptual renderings or otherwise described herein, will be provided or, if provided, will be as depicted or described herein. All prices are subject to change at any time and without notice, and do not include optional features or premiums for upgraded units. Prices quoted may be for raw spaces only and from time to time, price changes may have occurred that are not yet reflected herein. Please check with the official sales center for most current pricing. The project graphics, renderings and text provided herein are copyrighted works owned by the Developer. Unauthorized reproduction, display or other dissemination of such materials is strictly prohibited and constitutes copyright infringement. All rights reserved.🏠

[illegible]

Key Points

- NOTES:
1. ALL DIMENSIONS ARE MEASURED TO THE FACE OF GYP. UNLESS NOTED OTHERWISE, "CLR TO FINISH" INDICATES DIMENSIONS TO THE FACE OF FINISH
 2. REFER TO PARTITION SCHEDULE FOR PARTITION TYPES AND PERFORMANCE CHARACTERISTICS
 3. THE COMBINED ACoustically INSULATED 4-4 AND CC-2-3 PARTITION WITH MIN. 1/2" AIR GAP AT DEMISING WALLS PROVIDE STC-40
 4. THE COMBINED ACoustically INSULATED 4-4 AND CC-2-6 PARTITIONS WITH MIN. 1/2" AIR GAP AND ACoustically ISOLATED PIPES PROVIDE STC-40
 5. THE COMBINED ACoustically INSULATED AND UNBRACED 2-3 PARTITION AND FULLY GROUTED 6" CMU WALL ON L48 MEETS NC-30
 6. THE COMBINED ACoustically INSULATED AND UNBRACED 2-2 PARTITION AND FULLY GROUTED 6" CMU WALL ON L48 MEETS THE DESIGN CRITERIA
 7. PTD WOOD BASE APPLIED ON ALL PTD GYP. WALLS EXCEPT FOR BATHROOMS AND POWDER ROOMS. SEE A-6351-1 FOR DETAILS
 8. STONE BASE APPLIED ON ALL PTD GYP. WALLS IN BATHROOMS AND POWDER ROOMS. SEE A-6351-1 FOR DETAILS
 9. REFER TO A-5000S AND A-7000S FOR PORTAL TYPES AND DETAILS
 10. REFER TO A-4000S FOR ENLARGED KITCHEN, BATHROOM, BAR, AND LAUNDRY DRAWINGS
 11. REFER TO A-7000S FOR DOOR TYPES AND DETAILS



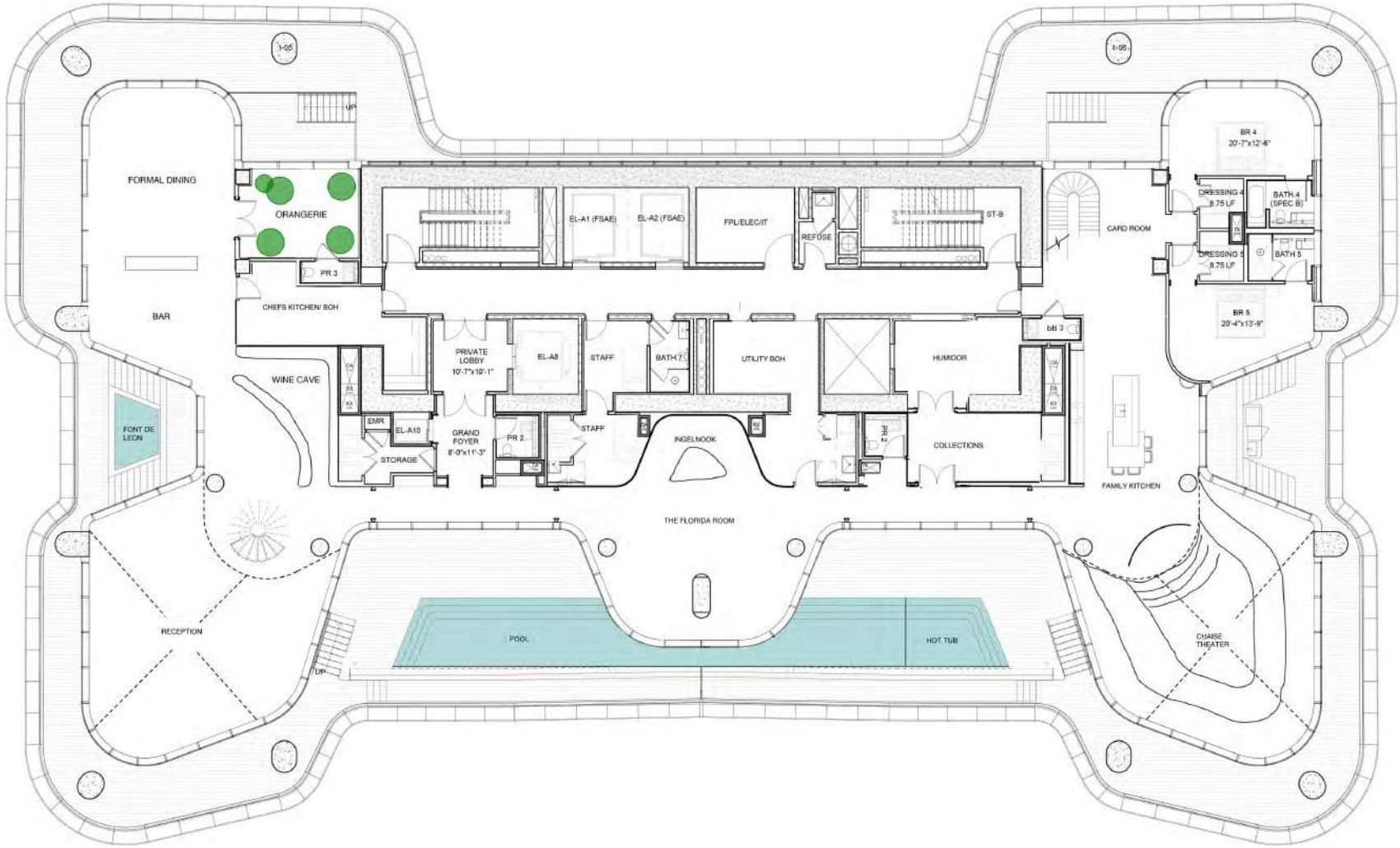
Scale: 1/8" = 1'-0"

Project No: 3402

LEVEL 64 PENTHOUSE
PARTIAL PLAN A


A-1464A-1

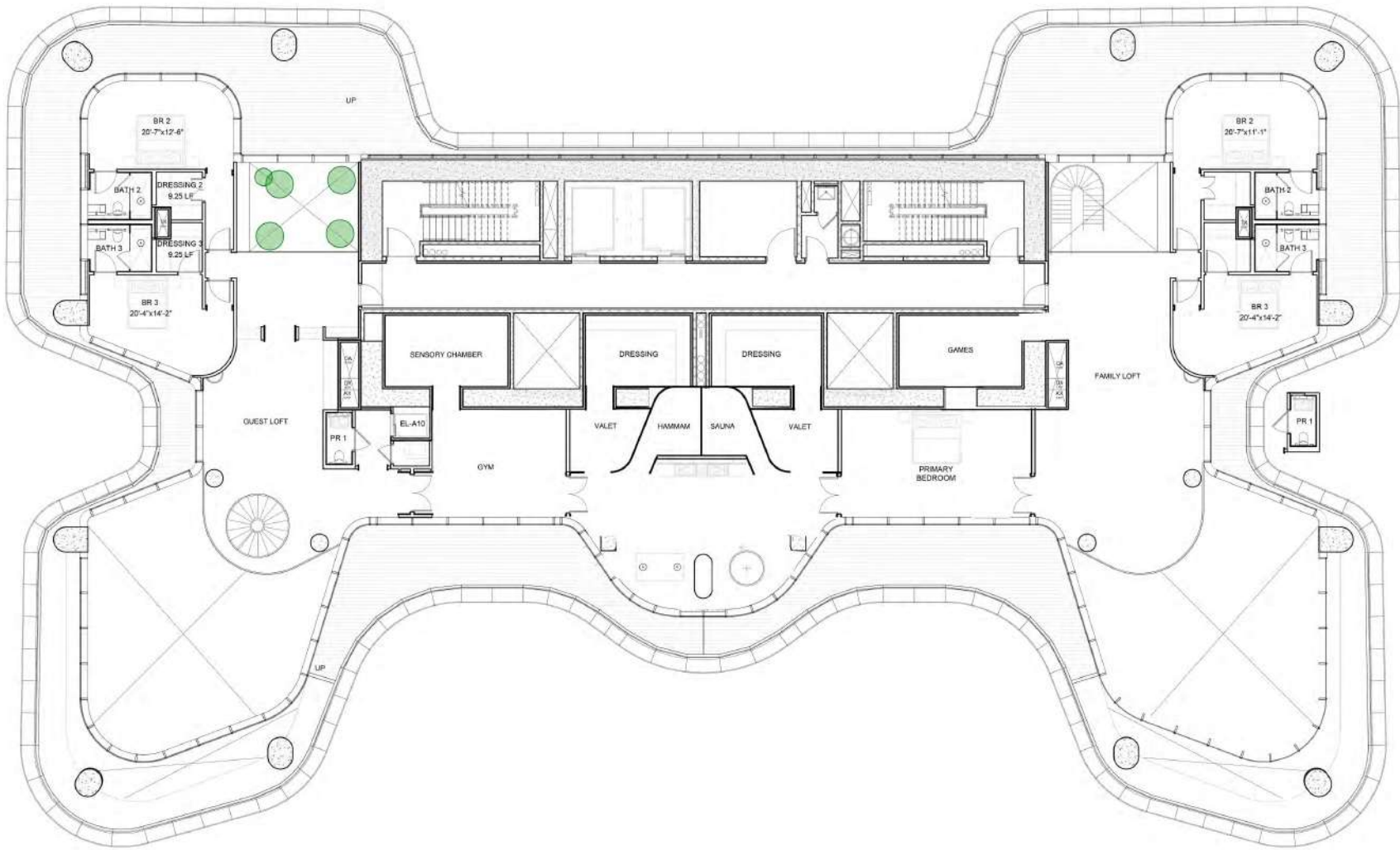
ENLARGED UNIT 01 PH HIGH
SCALE: 1/4" = 1'-0"



ENTERTAINING WING

FAMILY WING

This project is being developed by affiliates of OID T1 Developer LLC, a Florida limited liability company ("Developer"), which has a limited right to use the trademarked names and logos of Swire Properties and Mandarin Oriental Hotel Group. The Residences at Mandarin Oriental, Miami ("The Residences") are not developed, sponsored, owned, offered or sold by Mandarin Oriental Hotel Group or any affiliate thereof (MOHG), and MOHG makes no representation, warranty or guaranty of any kind regarding The Residences. Developer and owners of The Residences use the Mandarin Oriental name and trademarks subject to the terms of revocable licenses from MOHG which may expire or be terminated. These materials are for the South Tower only and any and all depictions, renderings, descriptions, etc., of any additional improvements within the overall project, including, without limitation, an additional tower and amenities associated with such additional tower are subject to change at any time, without notice. Those additional improvements may not be available at the time of closing and/or may never be made available and shall not be relied upon in any manner. ORAL REPRESENTATIONS CANNOT BE RELIED UPON AS CORRECTLY STATING THE REPRESENTATIONS OF THE DEVELOPER. FOR CORRECT REPRESENTATIONS, MAKE REFERENCE TO THIS WEBSITE AND TO THE DOCUMENTS REQUIRED BY SECTION 718.503, FLORIDA STATUTES, TO BE FURNISHED BY A DEVELOPER TO A BUYER OR LESSEE. THE COMPLETE OFFERING TERMS ARE IN A CPS-12 APPLICATION AVAILABLE FROM THE OFFEROR. FILE NO. CP24-0048. WARNING: THE CALIFORNIA DEPARTMENT OF REAL ESTATE HAS NOT INSPECTED, EXAMINED, OR QUALIFIED THIS OFFERING. This advertisement is a solicitation for the sale of Units in Island Drive South Condominium; N.J. Registration No. 24-04-0007. This Condominium has been registered with the Massachusetts Board of Registration of Real Estate Brokers and Salespersons F-1294-01-01. Stated square footages and dimensions are measured to the exterior boundaries of the exterior walls and the centerline of interior demising walls and in fact vary from the square footage and dimensions that would be determined by using the description and definition of the "Unit" set forth in the Declaration (which generally only includes the interior airspace between the perimeter walls and excludes all interior structural components and other common elements). This method is generally used in sales materials and is provided to allow a prospective buyer to compare the Units with units in other condominium projects that utilize the same method. Measurements of rooms set forth on this floor plan are generally taken at the farthest points of each given room (as if the room were a perfect rectangle), without regard for any cutouts or variations. Accordingly, the area of the actual room will typically be smaller than the product obtained by multiplying the stated length and width. All balcony areas are to interior glass face of guardrail (not construction gross). All dimensions are estimates which will vary with actual construction, and all floor plans, specifications and other development plans are subject to change and will not necessarily accurately reflect the final plans and specifications for The Residences. Prices, features, amenities and other descriptions are preliminary and are subject to change without notice, as provided in your purchase agreement. Prices do not include optional features or premiums for upgraded units. Price changes may occur that are not yet reflected herein. Buyers should check with the sales center for the most current pricing. The project graphics, renderings and text provided herein are copyrighted works owned by the Developer. All rights reserved. Unauthorized reproduction, display or other dissemination of such materials is strictly prohibited and constitutes copyright infringement. 



This project is being developed by affiliates of OID T1 Developer LLC, a Florida limited liability company ("Developer"), which has a limited right to use the trademarked names and logos of Swire Properties and Mandarin Oriental Hotel Group. The Residences at Mandarin Oriental, Miami ("The Residences") are not developed, sponsored, owned, offered or sold by Mandarin Oriental Hotel Group or any affiliate thereof (MOHG), and MOHG makes no representation, warranty or guaranty of any kind regarding The Residences. Developer and owners of The Residences use the Mandarin Oriental name and trademarks subject to the terms of revocable licenses from MOHG which may expire or be terminated. These materials are for the South Tower only and any and all depictions, renderings, descriptions, etc., of any additional improvements within the overall project, including, without limitation, an additional tower and amenities associated with such additional tower are subject to change at any time, without notice. Those additional improvements may not be available at the time of closing and/or may never be made available and shall not be relied upon in any manner. ORAL REPRESENTATIONS CANNOT BE RELIED UPON AS CORRECTLY STATING THE REPRESENTATIONS OF THE DEVELOPER. FOR CORRECT REPRESENTATIONS, MAKE REFERENCE TO THIS WEBSITE AND TO THE DOCUMENTS REQUIRED BY SECTION 718.503, FLORIDA STATUTES, TO BE FURNISHED BY A DEVELOPER TO A BUYER OR LESSEE. THE COMPLETE OFFERING TERMS ARE IN A CPS-12 APPLICATION AVAILABLE FROM THE OFFEROR. FILE NO. CP24-0048. WARNING: THE CALIFORNIA DEPARTMENT OF REAL ESTATE HAS NOT INSPECTED, EXAMINED, OR QUALIFIED THIS OFFERING. This advertisement is a solicitation for the sale of Units in Island Drive South Condominium; N.J. Registration No. 24-04-0007. This Condominium has been registered with the Massachusetts Board of Registration of Real Estate Brokers and Salespersons F-1294-01-01. Stated square footages and dimensions are measured to the exterior boundaries of the exterior walls and the centerline of interior demising walls and in fact vary from the square footage and dimensions that would be determined by using the description and definition of the "Unit" set forth in the Declaration (which generally only includes the interior airspace between the perimeter walls and excludes all interior structural components and other common elements). This method is generally used in sales materials and is provided to allow a prospective buyer to compare the Units with units in other condominium projects that utilize the same method. Measurements of rooms set forth on this floor plan are generally taken at the farthest points of each given room (as if the room were a perfect rectangle), without regard for any cutouts or variations. Accordingly, the area of the actual room will typically be smaller than the product obtained by multiplying the stated length and width. All balcony areas are to interior glass face of guardrail (not construction gross). All dimensions are estimates which will vary with actual construction, and all floor plans, specifications and other development plans are subject to change and will not necessarily accurately reflect the final plans and specifications for The Residences. Prices, features, amenities and other descriptions are preliminary and are subject to change without notice, as provided in your purchase agreement. Prices do not include optional features or premiums for upgraded units. Price changes may occur that are not yet reflected herein. Buyers should check with the sales center for the most current pricing. The project graphics, renderings and text provided herein are copyrighted works owned by the Developer. All rights reserved. Unauthorized reproduction, display or other dissemination of such materials is strictly prohibited and constitutes copyright infringement. 